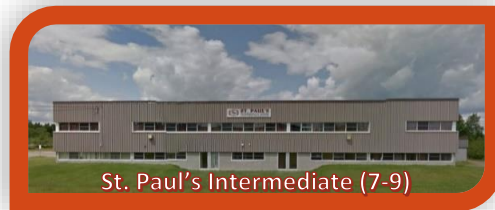


Gander School System Review



Background

The Newfoundland and Labrador English School District (NLESD) is pleased to report that the new elementary building is progressing and currently scheduled to open for the 2017-2018 school year. The Gander School System currently consists of Gander Academy (K-6), St. Paul's Intermediate (7-9) and Gander Collegiate (10-12).



Current Configuration of Gander School System

Gander Academy, Gander (K-6)

- Gander Academy (K-6) is the largest K-6 population school in the province with a current student population of 941 students. Gander Academy has both Early French Immersion and English streams, as well as Intensive Core French in grade 6.

St. Paul's Intermediate, Gander (7-9)

- St. Paul's Intermediate has Early French Immersion and English streams.

Gander Collegiate, Gander (L1 – L3)

- Gander Collegiate has Early French Immersion and English streams.

**All students from Benton are bussed to these schools.



Facilities

Gander Academy (K-6)

- Gander Academy is a fully accessible school.
- All students stay in for lunch. Parents have the option to pick up their child for lunch.
- The school has one scheduled lunch period: *11:54 a.m. – 12:36 p.m.*
- Gander Academy has 42 homeroom classrooms along with specialty rooms.
- Specialty Rooms: Library/Resource Center, 2 Gymnasiums, Nurse's office, 3 Music Rooms, Mini Theatre, 12 Instructional Resource Rooms, 2 Guidance Offices, 2 Itinerant Offices and 2 computer labs.

New 4-6 School (Temporarily Referred to as Gander Elementary)

Gander Elementary will reduce Gander Academy's population.

Gander Elementary will be a six-stream school.

It will have:

Three contingency classes – to provide space if the population exceeds six groupings;

Two music rooms;

Five Instructional Resource Rooms;

Gymnasium;

Library;

Lunch (Multipurpose) room and kitchen;

Administration and Guidance offices;

Modern heating and ventilation/filtration system, including twenty 500ft geothermal wells and a heat recovery system;

Fully automatic lighting system including room occupancy sensors.

The building will have a \$15.3m construction cost (in addition to previous \$2.3m site work).

The school is being built by Brook Construction and is slated to open September 2017.



New Gander School System Configuration



Enrolment Projections and Room Requirements

NLESD used the Baragar Systems software to compile enrolment projections. Baragar Systems is a custom planning software system for use by school districts across Canada to facilitate analysis of staffing and capacity requirements up to 15 years into the future.

Room requirements are calculated based on maximum class caps. For example, the class cap in English primary grades 1-3 is 25 students. So, if there were 50 students projected in Grade 2, this means the room requirement would be listed as 2 rooms (assuming 25 students in each class). However, if there were 51 students projected for the next year in Grade 3, the room requirement would be listed as 3 rooms (assuming 17 students in each class).

Gander Academy (K-3)

Gander Academy (K-3) Projection shown below in Table 1.

Year	K	1	2	3	Total	Rooms
2017	120	141	126	133	520	24
2018	130	122	142	126	520	25
2019	120	132	123	143	518	24
2020	122	122	133	123	500	23
2021	122	124	123	133	502	24
2022	122	124	125	123	494	24
2023	122	124	125	125	496	24
2024	122	124	125	125	496	24
2025	122	124	125	125	496	24
2026	122	124	125	125	496	24

Table 1

Current Gander Academy population will be split with the new elementary school.

- As K-3, Gander Academy is projected to decrease from 520 to a low of 494 in 2022, remaining stable near that point thereafter
 - Maximum room requirement of 25 in 2018

Gander Elementary (4-6)

The enrolment projections for the new Gander Elementary School shown below in Table 2.

Year	4	5	6	Total	Rooms
2017	144	140	133	417	17
2018	132	146	140	418	16
2019	127	134	146	407	17
2020	143	129	133	405	16
2021	123	145	128	396	16
2022	133	125	146	404	17
2023	123	135	125	383	16
2024	125	125	135	385	16
2025	125	127	125	377	16
2026	125	127	126	378	16

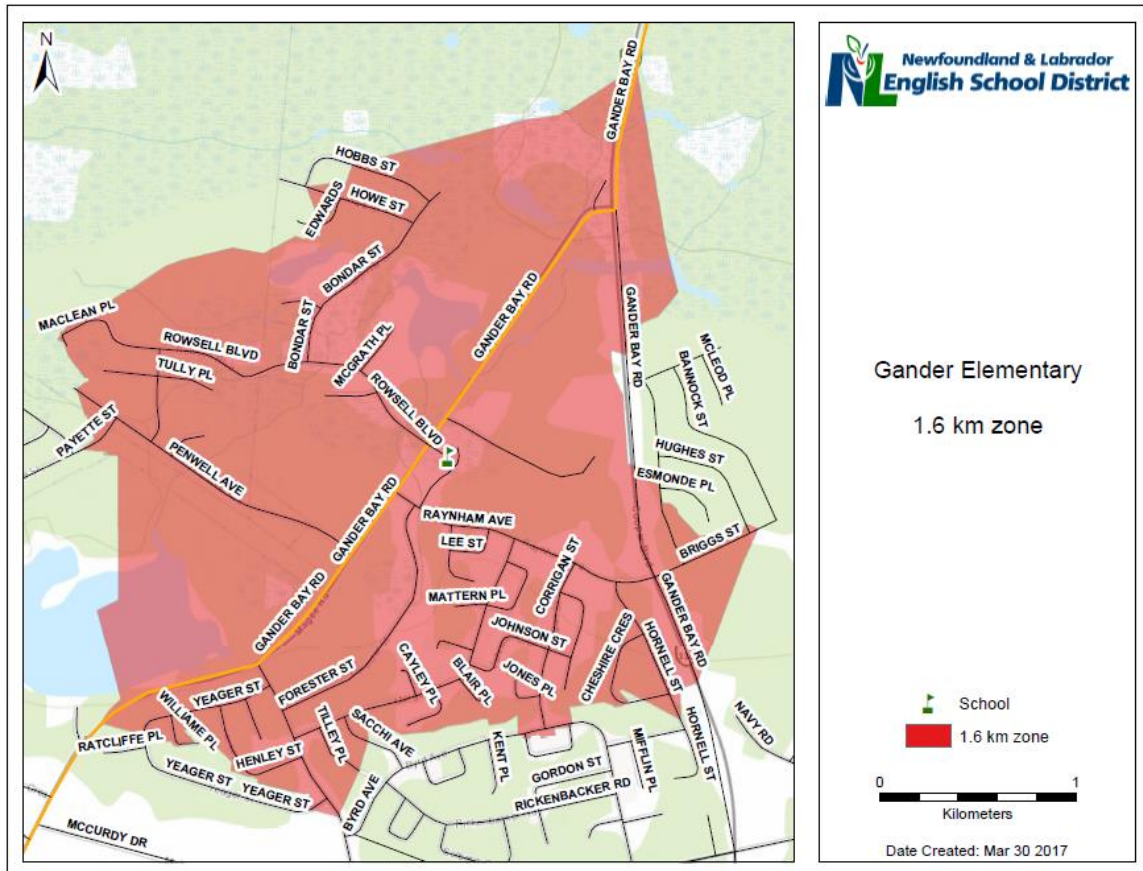
Table 2

Projected to decrease from 417 to a low of 377 in 2025, remaining stable near that point thereafter.

Maximum room requirement of 17 in 2017, 2019, and 2022.

Planned opening date September 2017.

Gander Elementary (4-6) 1.6 km Family Responsibility Zone



Students zoned to attend Gander Elementary but living more than 1.6 kms from Gander Elementary (outside of the depicted red area) are eligible for student transportation.

Transition Process

Transition Team formed consisting of both school administrative teams and school district staff representing all divisions.

New School Councils will be formed to represent the Gander Academy and Gander Elementary school communities.

School Council will engage in the process of choosing a name, school colours and logo/mascot for the new school. Consultation with the school community will take place as per District policy.

Conclusion

The District would like to thank the school councils, school administrators and staff, District staff and Trustee Winston Carter for invaluable input during this process. Ongoing feedback from the school communities is extremely important as the District moves forward with the process of reconfiguring the Gander School System.

