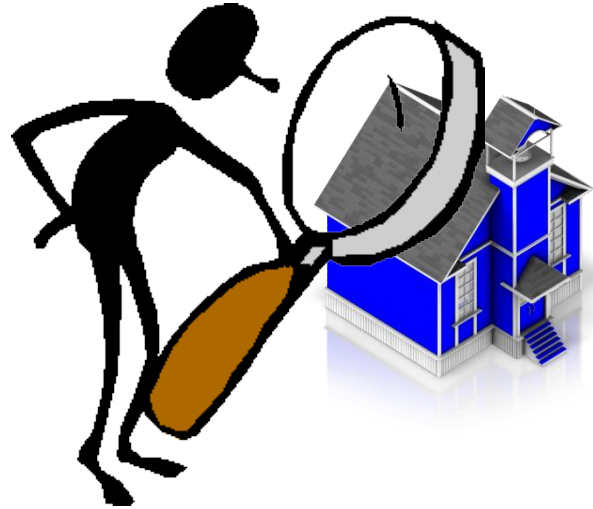




School Review



April 16, 2016



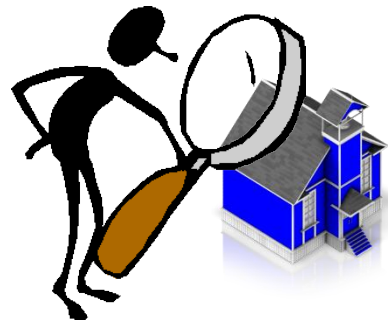


Outline

- School Review Policy Overview
- School Review 2016-2017 Overview
- Process and Timelines
- Eastern Region
 - School Review Profile - Holy Cross Junior High
 - Feedback Summary
 - School Review Profile - Whitbourne Elementary
 - Feedback Summary
- Central Region
 - School Review Profile - Heritage Academy
 - Feedback Summary
 - School Review Profile - Long Island Academy
 - Feedback Summary
- Western Region
 - School Review Profile - Sacred Heart All Grade
 - Feedback Summary
- Motions



School Review



- The Board of Trustees (“Board”) for the Newfoundland and Labrador English School District (“District”) is mandated to organize and administer primary, elementary and secondary education in the District.
- In doing so the Board strives to make the best use of school infrastructure, financial and human resources. Through its capital priorities planning process, the Board may initiate a school review, in order to maximize resources in a particular area and to assess the sustainability of a school facility and its educational programming.



School Review Triggers

- Declining Enrolment creating excess capacity
 - Current and Projected
- Significant capital improvements required and/or safety/environmental concerns
- Potential opportunities to enhance program delivery through reconfiguration of schools and/or catchment areas
- Changing demographics require catchment configuration
- School population creates capacity challenges
- Other circumstances



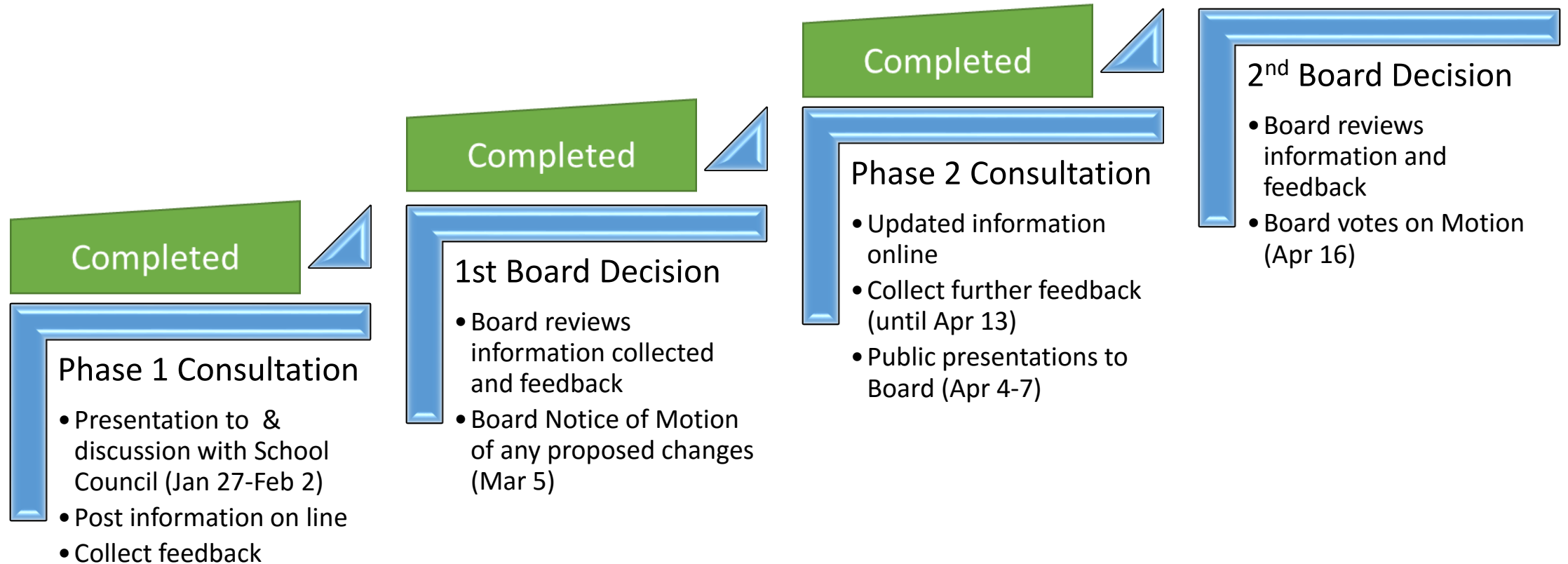
School Review Options to Consider

When a school review is conducted the options to be considered by the Board are:

- Maintain status quo;
- Seek funding to modify or replace facility and/or enhance programs;
- Reconfigure the grades in a school;
- Reconfigure the catchment area for the school; or,
- Close the school.



School Review Process and Timelines



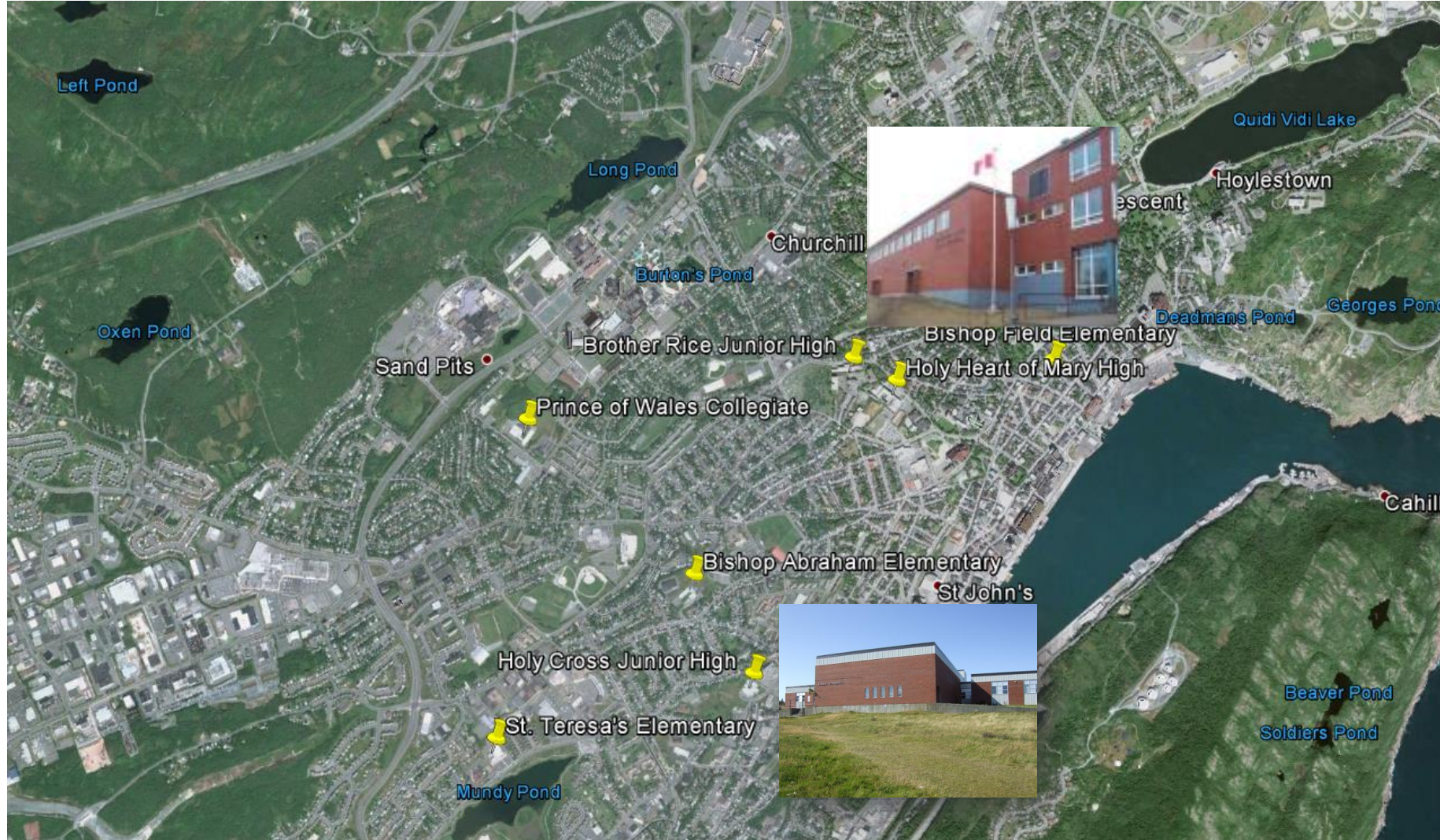


Schools Under Review 2016-2017

Region	Schools	Feedback
Eastern	<ol style="list-style-type: none">1. <u>Holy Cross Junior High, 7-9 (St. John's)</u>2. <u>Whitbourne Elementary, K-6 (Whitbourne)</u>	<ol style="list-style-type: none">1. <u>HCIH Feedback Summary</u>2. <u>WE Feedback Summary</u>
Potentially accommodated at	<ol style="list-style-type: none">1. Brother Rice Junior High, 7-9 (St. John's)2. Woodland Elementary, K-6 (Dildo)	
Central	<ol style="list-style-type: none">3. <u>Heritage Academy, K-3 (Greenspond)</u>4. <u>Long Island Academy, K-12 (Beaumont)</u>	<ol style="list-style-type: none">3. <u>HA Feedback Summary</u>4. <u>LIA Feedback Summary</u>
Potentially accommodated at	<ol style="list-style-type: none">3. Pearson Academy, K-12 (New-Wes-Valley)4. Dorset Collegiate, 7-12 (Pilley's Island)	
Western	<ol style="list-style-type: none">5. <u>Sacred Heart All Grade, K-12 (Conche)</u>	<ol style="list-style-type: none">5. <u>SHAG Feedback Summary</u>
Accommodated at	<ol style="list-style-type: none">5. Cloud River Academy, K-12 (Roddickton)	



School Review Profile (SRP): Holy Cross Junior High





1. STUDENT ENROLLMENT

- Historic and current student enrollment figures for the school and individual grade levels as well as available projections
 - Holy Cross Junior High (HCJH) has a current (2015-2016) enrolment of 108 students and is projected to be between 98-100 students next year (2016-2017). The enrolment projections are for less than 100 students over the next 10 years.
- Grade configuration
 - HCJH is grade 7-9. The school that could accommodate HCJH population is Brother Rice Junior High (BRJH) which has the same Grade 7-9 configuration.
- Class size
 - Currently in grade 7 at HCJH there are two English classes, one with 15 students and the other with 14 students. In Grade 8 there is one Late French Immersion (LFI) class with 12 students and two English classes, one with 16 students and the other with 14. In Grade 9 there is one class of 8 students in LFI and two English classes, one with 15 students and the other with 14.
- School system description
 - HCJH has one elementary feeder school, Bishop Abraham Elementary (K-6). Students attend Holy Heart of Mary High for grades 10-12.



Enrolment, Grade Configuration, Class Size NLESD Projections - Current Configuration

Holy Cross Junior High	7	8	9	Total	Capacity	Space	Rooms Required	Rooms	Space
2015	29	42	37	108	459	351	6	18	12
2016	24	30	44	98	459	361	6	18	12
2017	34	25	31	90	459	369	5	18	13
2018	27	35	26	88	459	371	4	18	14
2019	24	28	36	88	459	371	4	18	14
2020	21	25	29	75	459	384	3	18	15
2021	22	22	26	70	459	389	3	18	15
2022	21	23	23	67	459	392	3	18	15
2023	26	22	24	72	459	387	3	18	15
2024	27	27	23	77	459	382	3	18	15
2025	26	28	28	82	459	377	3	18	15

Brother Rice Junior High	7	8	9	Total	Capacity	Space	Rooms Required	Rooms	Space
2015	107	120	100	327	700	373	15	26	11
2016	106	109	120	335	700	365	15	26	11
2017	101	108	109	318	700	382	14	26	12
2018	125	103	108	336	700	364	14	26	12
2019	125	127	103	355	700	345	17	26	9
2020	129	127	127	383	700	317	17	26	9
2021	99	131	127	357	700	343	16	26	10
2022	120	101	131	352	700	348	15	26	11
2023	122	122	101	345	700	355	16	26	10
2024	125	124	122	371	700	329	17	26	9
2025	130	127	124	381	700	319	18	26	8



Enrolment, Grade Configuration, Class Size NLESD Projections - Proposed Amalgamation

Holy Cross Junior High + Brother Rice Junior High	7	8	9	Total	Capacity (Brother Rice)	Space (Brother Rice)	Rooms Required	Rooms	Space
2015	136	162	137	435	700	265	20	26	6
2016	130	139	164	433	700	267	19	26	7
2017	135	133	140	408	700	292	17	26	9
2018	152	138	134	424	700	276	17	26	9
2019	149	155	139	443	700	257	18	26	8
2020	150	152	156	458	700	242	20	26	6
2021	121	153	153	427	700	273	18	26	8
2022	141	124	154	419	700	281	18	26	8
2023	148	144	125	417	700	283	18	26	8
2024	152	151	145	448	700	252	20	26	6
2025	156	155	152	463	700	237	21	26	5



Enrolment, Grade Configuration, Class Size Baragar Systems Projections - Current Configuration

Holy Cross Junior High	7	8	9	Total	Capacity	Space	Rooms Required	Rooms	Space
2015	29	42	37	108	459	351	6	18	12
2016	29	29	42	100	459	359	5	18	13
2017	37	28	29	94	459	365	4	18	14
2018	35	37	29	101	459	358	5	18	13
2019	32	34	37	103	459	356	6	18	12
2020	33	32	34	99	459	360	6	18	12
2021	30	32	31	93	459	366	6	18	12
2022	28	30	32	90	459	369	5	18	13
2023	26	27	29	82	459	377	3	18	15
2024	27	26	27	80	459	379	3	18	15
2025	29	26	26	81	459	378	3	18	15

Brother Rice Junior High	7	8	9	Total	Capacity	Space	Rooms Required	Rooms	Space
2015	107	120	100	327	700	373	15	26	11
2016	111	102	119	332	700	368	15	26	11
2017	114	107	102	323	700	377	14	26	12
2018	119	110	107	336	700	364	14	26	12
2019	120	115	109	344	700	356	15	26	11
2020	116	116	115	347	700	353	15	26	11
2021	110	112	115	337	700	363	14	26	12
2022	122	106	112	340	700	360	14	26	12
2023	114	117	105	336	700	364	15	26	11
2024	113	110	117	340	700	360	15	26	11
2025	109	110	109	328	700	372	15	26	11

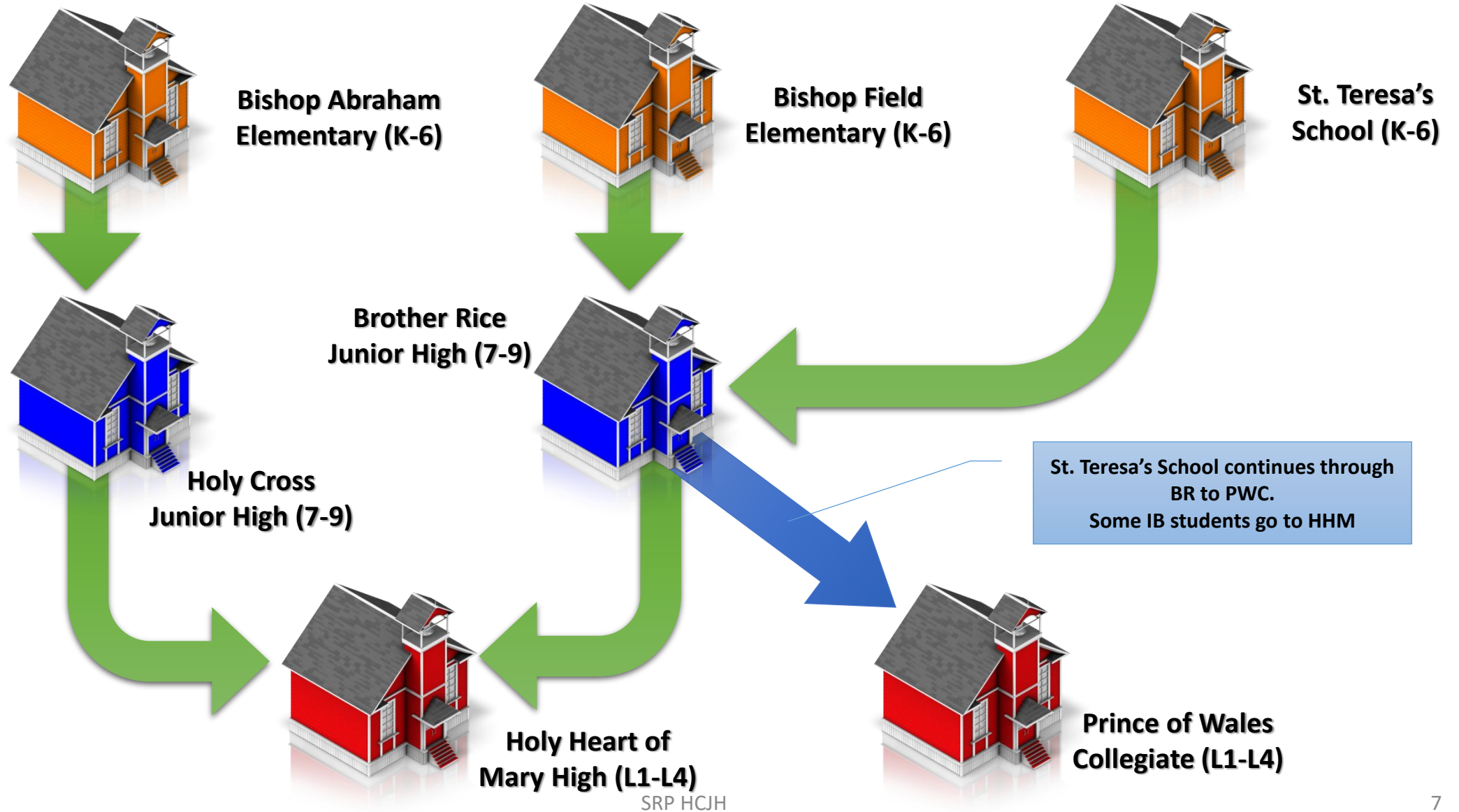


Enrolment, Grade Configuration, Class Size Baragar Systems Projections - Proposed Amalgamation

Holy Cross Junior High + Brother Rice Junior High	7	8	9	Total	Capacity (Brother Rice)	Space (Brother Rice)	Rooms Required	Rooms	Space
2015	136	162	137	435	700	265	20	26	6
2016	140	131	161	432	700	268	20	26	6
2017	151	135	131	417	700	283	17	26	9
2018	154	147	136	437	700	263	18	26	8
2019	152	149	146	447	700	253	18	26	8
2020	149	148	149	446	700	254	19	26	7
2021	140	144	146	430	700	270	17	26	9
2022	150	136	144	430	700	270	17	26	9
2023	140	144	134	418	700	282	18	26	8
2024	140	136	144	420	700	280	18	26	8
2025	138	136	135	409	700	291	18	26	8

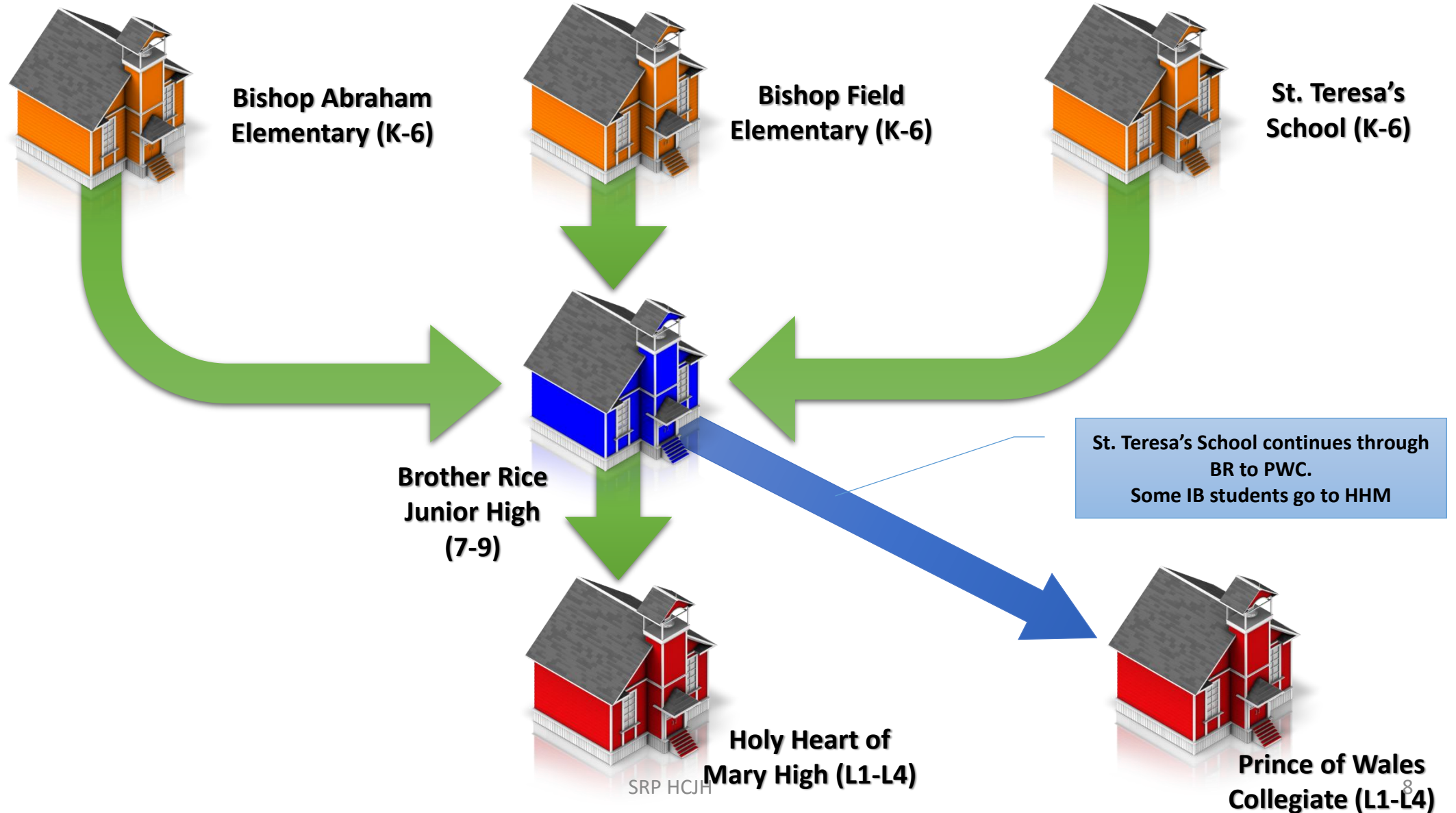


School System Description - Current





School System Description - Proposed 2016



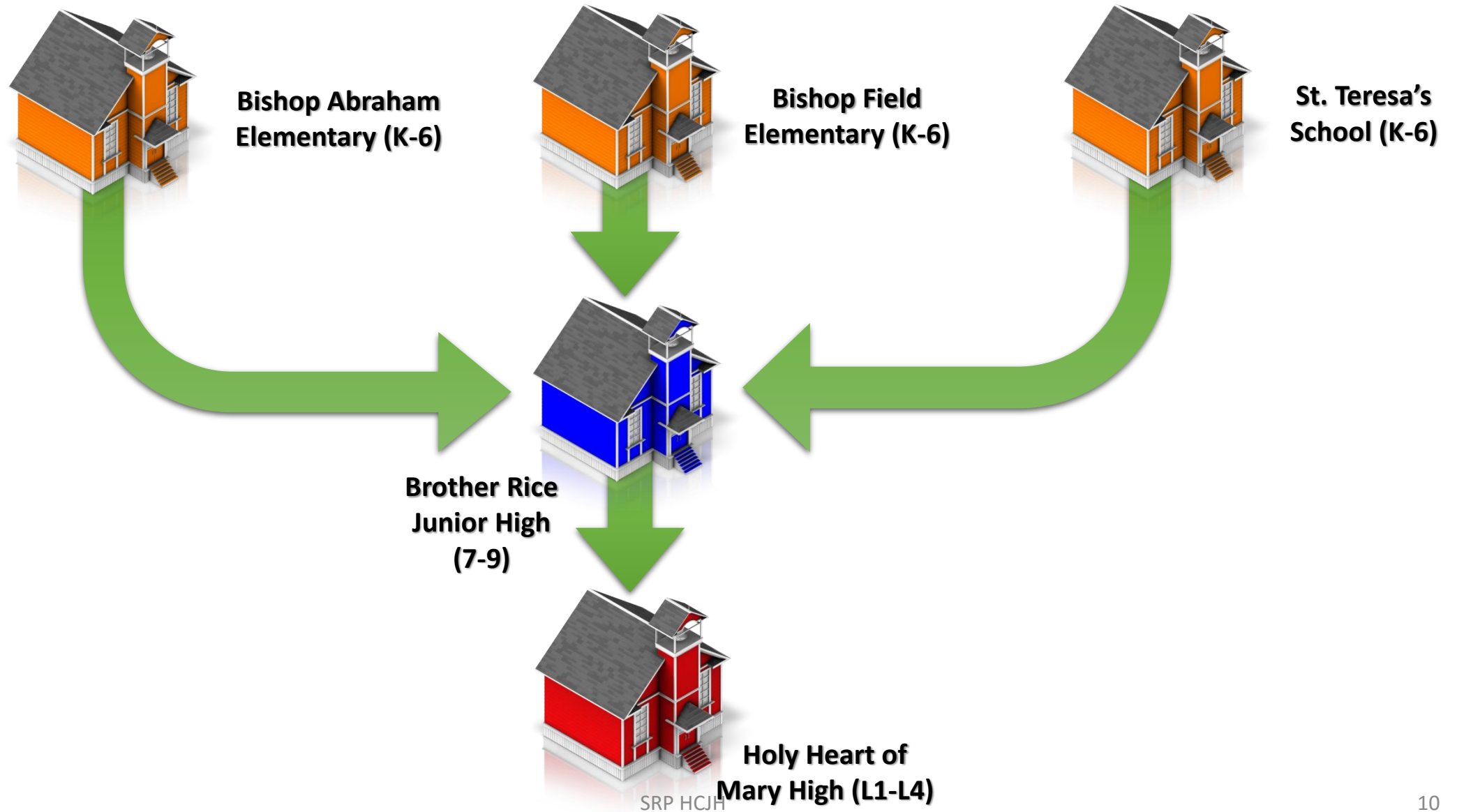


Current Split Feeder from BRJH to Holy Heart of Mary High & Prince of Wales Collegiate

Holy Heart of Mary	10	11	12	13	Total	Capacity	Space	Rooms Required	Rooms	Space
2015	261	344	318	56	979	1283	304	34	45	11
2016	259	273	349	72	953	1283	330	34	45	11
2017	268	271	277	79	895	1283	388	31	45	14
2018	242	280	275	63	860	1283	423	31	45	14
2019	220	253	284	62	819	1283	464	29	45	16
2020	236	230	257	64	787	1283	496	27	45	18
2021	233	247	234	58	772	1283	511	27	45	18
2022	238	243	251	53	785	1283	498	28	45	17
2023	254	249	247	57	807	1283	476	29	45	16
2024	225	265	253	56	799	1283	484	28	45	17
2025	235	235	269	57	796	1283	487	27	45	18
Prince of Wales Collegiate	10	11	12	13	Total	Capacity	Space	Rooms Required	Rooms	Space
2015	198	228	192	54	672	828	156	24	30	6
2016	194	199	222	48	663	828	165	23	30	7
2017	202	195	194	55	646	828	182	23	30	7
2018	204	203	190	48	645	828	183	22	30	8
2019	180	205	198	47	630	828	198	22	30	8
2020	204	181	200	49	634	828	194	23	30	7
2021	209	205	176	50	640	828	188	22	30	8
2022	214	210	200	44	668	828	160	24	30	6
2023	236	215	205	50	706	828	122	25	30	5
2024	206	238	210	51	705	828	123	24	30	6
2025	225	207	232	52	716	828	112	25	30	5



School System Description - Proposed 2017





Proposed Single Feeder from BRJH to Holy Heart of Mary High only

Holy Heart of Mary	10	11	12	13	Total	Capacity	Space	Rooms Required	Rooms	Space
2015	261	344	318	56	979	1283	304	34	45	11
2016	292	273	349	72	986	1283	297	36	45	9
2017	307	305	277	79	968	1283	315	34	45	11
2018	270	321	310	63	964	1283	319	35	45	10
2019	243	282	326	70	921	1283	362	34	45	11
2020	268	254	286	74	882	1283	401	32	45	13
2021	259	280	258	65	862	1283	421	33	45	12
2022	261	271	284	58	874	1283	409	33	45	12
2023	275	273	275	64	887	1283	396	34	45	11
2024	246	287	277	62	872	1283	411	34	45	11
2025	255	257	291	63	866	1283	417	34	45	11
Prince of Wales Collegiate	10	11	12	13	Total	Capacity	Space	Rooms Required	Rooms	Space
2015	198	228	192	54	672	828	156	24	30	6
2016	161	199	222	48	630	828	198	22	30	8
2017	163	162	194	55	574	828	254	21	30	9
2018	176	164	158	48	546	828	282	19	30	11
2019	157	177	160	39	533	828	295	19	30	11
2020	172	158	172	40	542	828	286	20	30	10
2021	183	173	154	43	553	828	275	20	30	10
2022	191	184	169	38	582	828	246	21	30	9
2023	215	192	179	42	628	828	200	23	30	7
2024	185	216	187	44	632	828	196	23	30	7
2025	205	186	210	46	647	828	181	23	30	7



2. PROGRAMMING AND SERVICES (1/5)

- Impact on a suitable and equitable range of learning opportunities for students due to declining enrollment.
 - Teacher allocation formulas are driven by enrolment numbers. In junior high configurations this also equates with less specialist teacher allocations. A decline in enrolment has necessitated the combining of some classes in non-core subjects at Holy Cross Junior High.
- Reorganization potential to enhance learning opportunities for students.
 - Larger enrolments mean greater specialist allocations. The reconfiguration of the two schools increases the viability of a Late French Immersion (LFI) program at Brother Rice. There is also opportunity for enhanced co-curricular and extra-curricular programming in areas such as music and sports.
- Class composition
 - Class composition would be in accordance with Provincial class caps. A combined population would facilitate the more efficient class groupings.
- Core curriculum
 - The core curriculum is offered at both HCJH and BRJH.



2. PROGRAMMING AND SERVICES (2/5)

- French
 - Although HCJH has Late French Immersion, declining enrolment means the program is less sustainable. This year there were no students availing of Grade 7 LFI and a small group of Grade 8 LFI. If HCJH were to remain open it is highly likely the LFI program would discontinue after the current Grade 8 students complete the program.
- Co-curricular and extra-curricular programming
 - Both HCJH and BRJH have extra-curricular programming. At BRJH students will have opportunities to participate in a wider variety of extra-curricular programs such as varsity athletic teams, intramurals program, leadership groups, etc. BRJH also has a full band program, orchestra and choir program.



2. PROGRAMMING AND SERVICES (3/5)

- Staffing
 - Due to declining enrolment HCJH has less teaching staff allocated. In 2014-2015 the allocation was 14.25. In 2015-2016 there were 12.25 units allocated. If the school were to remain open it is projected to have 10.25 units.
 - Due to factors such as class caps there are staffing efficiencies associated with combining school populations. There are projected to be 5.0 less teaching units required in a combined school versus two separate schools for next year.
- Optional programming
 - Option to add LFI at BRJH (as above).



2. PROGRAMMING AND SERVICES (4/5)

- Specialist spaces and resources (e.g. Music, Art)
 - Both HCJH and BRJH have adequate Music and Art instructional areas.
 - Other specialty spaces at Brother Rice include:
 - Music Room plus Celtic Hall
 - Two Computer Labs plus Fabrication Room
 - Dedicated Learning Resources Centre
 - Science labs
 - Home Economics room
- Student Support Services
 - Both HCJH and BRJH have adequate student support services instructional areas.



2. PROGRAMMING AND SERVICES (5/5)

- Student Support Services
 - Both HCJH and BRJH have adequate student support services instructional areas.
- Community programs in school (e.g. library, childcare, breakfast program)
 - Both HCJH and BRJH have an array of community programs in place. If HCJH were to close, there is potential to transfer/combine community programs. Some of the community organizations/programs currently in place at Brother Rice include:
 - Rabbit Town Community Centre
 - City of St. Johns partnership to increase physical activity
 - Kids eat smart program 3 days per week
 - YMCA Alternative Suspension Program
 - Association of New Canadians
 - Buckmaster Community Centre after school homework sessions



3. Facility

- Geography
 - St. John's.
- Age of facility
 - HCJH was constructed 45 years ago. BRJH was constructed 53 years ago.
- Capital projects/repairs carried out in recent years
 - BRJH windows were replaced five years ago.
- Capital projects/repairs required
 - No major.
- Health/environmental concerns
 - None.
- Infrastructure to support programming
 - All present.
- Capacity and utilization
 - Six of 18 rooms used are currently utilized at HCJH. Currently 15 of 26 rooms are utilized at BRJH. A combined population at BRJH can be accommodated for the foreseeable future with a peak requirement of 20-21 rooms and 26 available rooms.



4. TRANSPORTATION

- Transportation description and resources required
 - No buses are currently utilized at HCJH and four are employed at BRJH.
 - A combined school would have 241 bus eligible students requiring five buses.
- Distance to proposed school
 - Proposed routes would be between 25 – 35 minute estimated duration.
- Potential challenges and opportunities with transportation to proposed school
 - To redesign the routes using the current contract, bell times may need to be adjusted to ensure enough time for the double runs as is currently configured.



5. FINANCES

- School operating costs
 - Operating Expenses (\$310K):
 - Salaries and Benefits of Secretarial, Maintenance, and Custodial
 - Utilities (Phone, Electricity, Fuel)
 - Janitorial products, snow removal, municipal fees, garbage collection, fire protection, and repairs & maintenance
 - Up to 5.0 Teaching Units (\$500K)
 - Includes salaries, benefits, and substitutes costs (District averages)
- Transportation costs
 - Amount would be determined through public tender. Current contracts range between \$29K – \$75K
- Funds required for capital projects/repairs
 - No capital expenditure required, however there will be minor repair and maintenance costs associated with the potential move.



6. SCHOOL(S) WHERE STUDENTS WILL BE TRANSFERRED

- What is the capacity of the proposed school to accommodate the students?
 - Brother Rice Junior High (BRJH) is a grade 7-9 school with 26 available instructional rooms required. The peak room requirement for a combined school population would be projected to be between 20-21 rooms.
- How will programming be maintained or enhanced for the incoming students?
 - A larger school enrolment will result in a higher specialist allocation in the practical and fine arts. A combined population may provide the ability to add a Late French Immersion (LFI) program if interest levels warrant. Current HCJH Grade 8 students would proceed with LFI in Grade 9 at Br. Rice if HCJH closes.
- Other relevant information?
 - There is the possibility that with a combined population there may be time slots for physical education that will require the scheduling of two classes simultaneously in the gymnasium. This is not uncommon and mitigated by the fact that BRJH has a larger than average gymnasium which can be divided in two if necessary on occasion.



Holy Cross Junior High (HHM and PWC System) Feedback

School: Holy Cross Junior High (Brother Rice/Holy Heart System)		
Feedback Method	Tally FOR	Tally AGAINST
Surveys	1	10
Emails	0	3
Faxes	0	0
Phone Calls	0	0
Public Presentations	0	20
Total	34	



Holy Cross Junior High (HHM and PWC System) Feedback

Themes:

- Community school
- Walking distance for most
- Adding bussing will take away from physical activity
- Catchment has been eroded over the years due to District changes
- Lack of green space at Brother Rice – none in general area of the two area schools
- Bigger school – more of a chance that those at risk will fall through the cracks
- Strong community spirit
- A potential amalgamation could impact on social justice/access
- Able to develop skills among students (sports teams, breakfast club, volunteer opportunities) at HCJH



Representative Sample Comments (1/5)

- “It also seems that financial consideration is the driving factor as I see very little gain for the majority of the children. I understand that cost efficiency needs to be considered however bigger classes, bigger school population, less green space, etc will not benefit children's education.. . I was disappointed to learn of the 'possible' closure, my son just started Kindergarden at Bishop Abraham and would have gone to Holy Cross. Part of the reason I remain living in this area of town is the size of the schools my son would attend as he grows, and the benefit of my parents being able to walk him to school. The smaller school/class size provides a learning environment that cannot be gained when classes are larger. Also, as a school population increases so do all the negative aspects increase, such as bullying, drugs, etc...”



Representative Sample Comments (2/5)

- “I am aware that the Department of Education has a limited budget and things must be cut, but it is short sighted to close another inner city school. There are families in the area that depend on these schools and the city does not need another empty yet solid building going to rack and ruin. The current Junior High Schools are over crowded and have inadequate facilities as happens when too many students are forced into different schools. Capacity numbers are outdated they are from 1970's stats and are no longer viable. Schools capacities should be based on Fire Code maximum capacity of the gymnasiums. Leary's Brook, Beaconsfield, Brother Rice and McDonald Junior High are all full schools. Adding more to these schools will strain already in demand facilities.”



Representative Sample Comments (3/5)

- “Currently my son is at St. Teresa's School... I am a single Mom without the benefit of a vehicle for transportation. My hope is that if the proposed change goes through then my son could avail of bussing to get him to and from school everyday and this would alleviate the stress of worrying about his transportation. As well, Holy Heart is in closer proximity to Brother Rice as opposed to busing him to PWC which much farther away from his home base.. . Furthermore, the teen years are crucial to a child's development and I believe every effort should be made to allow children to receive their higher learning in the company of their peers as opposed to uprooting them to a school where a new peer base exists... I respectfully ask that you take these concerns into consideration when making your final decision.”



Representative Sample Comments (4/5)

- “Since I moved to this area we have lost 4 schools the schools were one of the reason we purchased a home in the area. My son has ADHD and well lost in a school with 300 plus students. This is the first year he has enjoyed school. In grade four he was only able to attend for 3 hours a day because of his behaviour and it was believed he may also have a learning disability; however this year he has an 82 average.”



Representative Sample Comments (5/5)

- “My son requires classroom support to succeed academically. Due to the small class size he is given the instruction he needs to not be left behind. If the students are re-directed to Brother Rice with a larger school population and class sizes I fear that he will not receive the education that he deserves.”