

PICCADILLY CENTRAL HIGH/STEPHENVILLE HIGH
SCHOOL SYSTEMS REVIEW





BACKGROUND

On December 7, 2019, the Board of Trustees read the following Notice of Motion to be voted on at the March 28, 2020 public meeting of the Board:

MOTION: Piccadilly Central High / Stephenville High School Systems, Stephenville High (9-12), Pathfinder Learning Centre (L.S. Eddy) (10-12), Stephenville Middle School (6-8), Stephenville Elementary (4-5), Stephenville Primary (K-3); Piccadilly Central High (9-12), St. Thomas Aquinas (K-8), Our Lady of the Cape (K-8), Lourdes Elementary (K-8).

WHEREAS the Newfoundland and Labrador English School District is committed to providing the best possible educational programs for students; and

WHEREAS a reconfiguration of grading and a reorganization of schooling in the Piccadilly Central High/ Stephenville High School Systems is required to achieve that objective;

BE IT THEREFORE RESOLVED that: St. Thomas Aquinas (K-8) will close effective June, 2020. Stephenville Elementary (4-5) will close effective June, 2020.

BE IT THEREFORE FURTHER RESOLVED that: Stephenville Middle School will be reconfigured from Grades 6-8 to Grades 4-7. Stephenville High School will be reconfigured from Grades 9-12 to Grades 8-12.

BE IT THEREFORE FURTHER RESOLVED that: All students attending Stephenville Elementary will attend Stephenville Middle School.

BE IT THEREFORE FURTHER RESOLVED that: Stephenville Primary School student attendance zone will be rezoned to include the current student attendance zone for St. Thomas Aquinas. Stephenville Middle School student attendance zone will be rezoned to include the current student attendance zone for St. Thomas Aquinas. Stephenville High School student attendance zone will be rezoned to include the current student attendance zone for St. Thomas Aquinas. All students who previously attended St. Thomas Aquinas K-8 and who are currently attending Piccadilly Central High will continue to attend Piccadilly Central High until completion of high school.

BE IT THEREFORE FURTHER RESOLVED that: The Pathfinder Learning Centre (L.S. Eddy) (10-12) will relocate to the site of the former Stephenville Elementary.

CURRENT CONFIGURATION

The Piccadilly Central High school system consists of Lourdes Elementary (K-8) in Lourdes, Our Lady of the Cape School (K-8) in Cape St. George, St. Thomas Aquinas (K-8) in Port au Port, and Piccadilly Central High (9-12) in Piccadilly.

The Stephenville High school system consists of St. Thomas Aquinas (K-8) in Port au Port and Stephenville Primary (K-3), Stephenville Elementary (4-5), Stephenville Middle School (6-8), Stephenville High (9-12), and Pathfinder Learning Centre (10-12) in Stephenville.

LOURDES ELEMENTARY

- Lourdes Elementary is a Grades K-8 school with 13 classrooms.
- The school has an estimated capacity of 345 students.
- The school has a current enrolment of 161.
- Building was constructed in 1970.

OUR LADY OF THE CAPE SCHOOL

- Our Lady of the Cape School is a Grades K-8 school with 10 classrooms.
- The school has an estimated capacity of 250 students.
- The school has a current enrolment of 44.
- Building was constructed in 1979.

ST. THOMAS AQUINAS

- St. Thomas Aquinas is a Grades K-8 school with 12 classrooms.
- The school has an estimated capacity of 325 students.
- The school has a current enrolment of 78.
- Building was constructed in 1960.

PICCADILLY CENTRAL HIGH

- Piccadilly Central High is a Grades 9-12 school with 11 classrooms.
- The school has an estimated capacity of 330 students.
- The school has a current enrolment of 104.
- Building was constructed in 1976.

STEPHENVILLE PRIMARY

- Stephenville Primary is a Grades K-3 school with 18 classrooms.
- The school has an estimated capacity of 420 students.
- The school has a current enrolment of 346.
- Building was constructed in 1992.

STEPHENVILLE ELEMENTARY

- Stephenville Elementary is a Grades 4-5 school with 15 classrooms.
- The school has an estimated capacity of 420 students.
- The school has a current enrolment of 190.
- Building was constructed in 1985.

STEPHENVILLE MIDDLE SCHOOL

- Stephenville Middle School is a Grades 6-8 school with 19 classrooms.
- The school has an estimated capacity of 550 students.
- The school has a current enrolment of 291.
- Building was constructed in 1972.

STEPHENVILLE HIGH

- Stephenville High is a Grades 9-12 school with 26 classrooms.
- The school has an estimated capacity of 780 students.
- The school has a current enrolment of 399.
- Building was constructed in 1972.

PATHFINDER LEARNING CENTRE

- Pathfinder Learning Centre is a Grades 10-12 alternate school with sites in Stephenville and Corner Brook.
- Stephenville site uses one classroom in L.S. Eddy building.
- The school has a current enrolment of 10 Stephenville students.
- Building was constructed in 1977.



ENROLMENT PROJECTIONS AND ROOM REQUIREMENTS

Enrolment projections were conducted by NLESD using Baragar Systems, a custom planning software suite for use by school districts across Canada. These projections are a best estimate of future enrolments based on current data and historical trends. Actual enrolments may differ from projections. Enrolments listed for a given school year are reflective of the data on September 30 of that year.

Room requirements are calculated on the basis of maximum class caps. For example, the class cap in primary Grades is 25 students, so if there were 50 students projected in Grade 2, this means the room requirement would be listed as two rooms of 25 students per class. However, if there were 51 students projected for the next year in Grade 3, the room requirement would be listed as three rooms of 17 students per class. Combined classes of up to 18 students for Grades 1 to 6 are assumed and included in room requirement calculations. Schools with less than 25 students may use multi-grading, in which the cap on number of students depends on the Grade configuration. Senior high classes have no official cap; these room requirement calculations assume a cap of 30.

The listed estimated capacities assume that all classrooms are full to the grade level caps. However, based on the distribution of students in each grade level, schools generally do not have all classrooms completely filled. For this reason, the calculated room requirement is a more accurate representation of a school's ability to accommodate the number of students enrolled.

LOURDES ELEMENTARY

Assuming the current K-8 configuration, the enrolment projections for Lourdes Elementary are shown in Figure 1 below. The school has a total of 13 classrooms.

| | K | 1 | 2 | 3 | 4 | 5 | 6 | 7 | 8 | Total | Rooms |
|------|----|----|----|----|----|----|----|----|----|-------|-------|
| 2019 | 12 | 12 | 15 | 12 | 23 | 17 | 23 | 23 | 24 | 161 | 9 |
| 2020 | 9 | 13 | 12 | 17 | 12 | 24 | 16 | 24 | 23 | 150 | 9 |
| 2021 | 8 | 10 | 13 | 14 | 17 | 13 | 23 | 17 | 24 | 139 | 9 |
| 2022 | 10 | 9 | 10 | 15 | 14 | 18 | 12 | 24 | 17 | 129 | 9 |
| 2023 | 9 | 11 | 9 | 12 | 15 | 15 | 17 | 13 | 24 | 125 | 9 |
| 2024 | 9 | 10 | 11 | 11 | 12 | 16 | 14 | 18 | 13 | 114 | 9 |
| 2025 | 9 | 10 | 10 | 13 | 11 | 13 | 15 | 15 | 18 | 114 | 9 |
| 2026 | 9 | 10 | 10 | 12 | 13 | 12 | 12 | 16 | 15 | 109 | 9 |
| 2027 | 9 | 10 | 10 | 12 | 12 | 14 | 11 | 13 | 16 | 107 | 9 |
| 2028 | 9 | 10 | 10 | 12 | 12 | 13 | 13 | 12 | 13 | 104 | 9 |
| 2029 | 9 | 10 | 10 | 12 | 12 | 13 | 12 | 14 | 12 | 104 | 9 |

Figure 1: Lourdes Elementary enrolment projections

The projection model shows enrolment decreasing to a low of 104 in 2028 and 2029. The school is projected to require a maximum of nine classrooms from 2020 to 2029.

OUR LADY OF THE CAPE SCHOOL

Assuming the current K-8 configuration, the enrolment projections for Our Lady of the Cape School are shown in Figure 2 below. The school has a total of 10 classrooms.

| | K | 1 | 2 | 3 | 4 | 5 | 6 | 7 | 8 | Total | Rooms |
|------|---|---|---|---|---|---|---|---|---|-------|-------|
| 2019 | 4 | 8 | 3 | 5 | 5 | 2 | 6 | 4 | 7 | 44 | 9 |
| 2020 | 4 | 5 | 9 | 3 | 5 | 5 | 2 | 6 | 4 | 43 | 9 |
| 2021 | 2 | 5 | 6 | 9 | 3 | 5 | 5 | 2 | 6 | 43 | 9 |
| 2022 | 3 | 3 | 6 | 6 | 9 | 3 | 5 | 5 | 2 | 42 | 9 |
| 2023 | 3 | 4 | 4 | 6 | 6 | 9 | 3 | 5 | 5 | 45 | 9 |
| 2024 | 3 | 4 | 5 | 4 | 6 | 6 | 9 | 3 | 5 | 45 | 9 |
| 2025 | 3 | 4 | 5 | 5 | 4 | 6 | 6 | 9 | 3 | 45 | 9 |
| 2026 | 3 | 4 | 5 | 5 | 5 | 4 | 6 | 6 | 9 | 47 | 9 |
| 2027 | 3 | 4 | 5 | 5 | 5 | 5 | 4 | 6 | 6 | 43 | 9 |
| 2028 | 3 | 4 | 5 | 5 | 5 | 5 | 5 | 4 | 6 | 42 | 9 |
| 2029 | 3 | 4 | 5 | 5 | 5 | 5 | 5 | 5 | 4 | 41 | 9 |

Figure 2: Our Lady of the Cape School enrolment projections

The projection model shows enrolment varying between a low of 42 in 2022 and a high of 47 in 2026. The school is projected to require a maximum of nine classrooms from 2020 to 2029. The school uses three multi-grade classes (a Kindergarten to Grade 2 class, a Grade 4 to Grade 6 class, and a Grade 7/Grade 8 class) for a total of four classes. The school could continue to use multi-grading throughout the ten-year projection to accommodate its enrolment in four classrooms.

ST. THOMAS AQUINAS

Assuming the current K-8 configuration, the enrolment projections for St. Thomas Aquinas are shown in Figure 3 below. The school has a total of 12 classrooms.

| | K | 1 | 2 | 3 | 4 | 5 | 6 | 7 | 8 | Total | Rooms |
|------|----|----|----|----|----|----|----|----|----|-------|-------|
| 2019 | 2 | 8 | 11 | 8 | 9 | 11 | 13 | 8 | 8 | 78 | 9 |
| 2020 | 10 | 3 | 8 | 10 | 9 | 8 | 12 | 14 | 9 | 83 | 9 |
| 2021 | 8 | 11 | 3 | 7 | 11 | 9 | 8 | 12 | 14 | 83 | 9 |
| 2022 | 8 | 9 | 11 | 3 | 9 | 12 | 9 | 9 | 13 | 83 | 9 |
| 2023 | 7 | 9 | 9 | 10 | 4 | 8 | 12 | 9 | 9 | 77 | 9 |
| 2024 | 8 | 8 | 9 | 8 | 11 | 3 | 8 | 12 | 9 | 76 | 9 |
| 2025 | 6 | 8 | 8 | 8 | 9 | 10 | 3 | 8 | 12 | 72 | 9 |
| 2026 | 6 | 7 | 8 | 7 | 9 | 8 | 10 | 3 | 8 | 66 | 9 |
| 2027 | 5 | 7 | 7 | 7 | 8 | 8 | 8 | 10 | 3 | 63 | 9 |
| 2028 | 6 | 6 | 7 | 6 | 9 | 7 | 8 | 8 | 11 | 68 | 9 |
| 2029 | 5 | 7 | 6 | 6 | 7 | 8 | 7 | 8 | 8 | 62 | 9 |

Figure 3: St. Thomas Aquinas enrolment projections

The projection model shows enrolment increasing to a high of 83 from 2020 to 2022 before decreasing to a low of 62 in 2029. The school is projected to require a maximum of nine classrooms from 2020 to 2029. The school uses one multi-grade class (a Kindergarten/Grade 1 class) for a total of eight classes. The school could continue to use multi-grading throughout the 10-year projection to accommodate its enrolment in eight classrooms.

PICCADILLY CENTRAL HIGH

Assuming the current 9-12 configuration, the enrolment projections for Piccadilly Central High are shown in Figure 4 below. The school has a total of 11 classrooms.

| | 9 | 10 | 11 | 12 | 13 | Total | Rooms |
|------|----|----|----|----|----|-------|-------|
| 2019 | 28 | 24 | 28 | 23 | 1 | 104 | 4 |
| 2020 | 33 | 28 | 21 | 27 | 1 | 110 | 5 |
| 2021 | 30 | 34 | 26 | 20 | 1 | 111 | 4 |
| 2022 | 32 | 31 | 31 | 24 | 1 | 119 | 5 |
| 2023 | 23 | 33 | 28 | 30 | 1 | 115 | 5 |
| 2024 | 33 | 23 | 30 | 27 | 1 | 114 | 5 |
| 2025 | 21 | 33 | 20 | 28 | 1 | 103 | 4 |
| 2026 | 23 | 21 | 30 | 19 | 1 | 94 | 4 |
| 2027 | 26 | 24 | 18 | 29 | 1 | 98 | 4 |
| 2028 | 24 | 27 | 21 | 17 | 1 | 90 | 4 |
| 2029 | 20 | 24 | 24 | 19 | 1 | 88 | 4 |

Figure 4: Piccadilly Central High enrolment projections

The projection model shows enrolment decreasing to a low of 88 in 2029. The school is projected to require a maximum of five classrooms in 2020 and 2022 to 2024.

STEPHENVILLE PRIMARY

Assuming the current K-3 configuration, the enrolment projections for Stephenville Primary are shown in Figure 5 below. The school has a total of 18 classrooms.

| | K | 1 | 2 | 3 | Total | Rooms |
|------|----|----|----|----|-------|-------|
| 2019 | 91 | 74 | 93 | 88 | 346 | 17 |
| 2020 | 74 | 94 | 74 | 92 | 334 | 18 |
| 2021 | 75 | 77 | 94 | 74 | 320 | 17 |
| 2022 | 59 | 77 | 78 | 94 | 308 | 16 |
| 2023 | 72 | 61 | 78 | 77 | 288 | 15 |
| 2024 | 74 | 75 | 61 | 78 | 288 | 15 |
| 2025 | 74 | 77 | 75 | 61 | 287 | 14 |
| 2026 | 73 | 77 | 77 | 75 | 302 | 14 |
| 2027 | 73 | 76 | 77 | 77 | 303 | 14 |
| 2028 | 74 | 76 | 76 | 77 | 303 | 14 |
| 2029 | 74 | 77 | 76 | 76 | 303 | 15 |

Figure 5: Stephenville Primary enrolment projections

The projection model shows enrolment decreasing to a low of 287 in 2025. The school is projected to require a maximum of 18 classrooms in 2020.

STEPHENVILLE ELEMENTARY

Assuming the current 4-5 configuration, the enrolment projections for Stephenville Elementary are shown in Figure 6 below. The school has a total of 15 classrooms.

| | 4 | 5 | Total | Rooms |
|------|-----|-----|-------|-------|
| 2019 | 91 | 99 | 190 | 8 |
| 2020 | 94 | 91 | 185 | 8 |
| 2021 | 100 | 96 | 196 | 9 |
| 2022 | 82 | 100 | 182 | 8 |
| 2023 | 101 | 82 | 183 | 8 |
| 2024 | 85 | 101 | 186 | 8 |
| 2025 | 85 | 85 | 170 | 7 |
| 2026 | 68 | 85 | 153 | 7 |
| 2027 | 82 | 69 | 151 | 6 |
| 2028 | 85 | 82 | 167 | 7 |
| 2029 | 85 | 85 | 170 | 7 |

Figure 6: Stephenville Elementary enrolment projections

The projection model shows enrolment decreasing to a low of 151 in 2027. The school is projected to require a maximum of nine classrooms in 2021.

STEPHENVILLE MIDDLE SCHOOL

Assuming the current 6-8 configuration, the enrolment projections for Stephenville Middle School are shown in Figure 7 below. The school has a total of 19 classrooms.

| | 6 | 7 | 8 | Total | Rooms |
|------|-----|-----|-----|-------|-------|
| 2019 | 98 | 100 | 93 | 291 | 12 |
| 2020 | 100 | 108 | 101 | 309 | 12 |
| 2021 | 90 | 109 | 108 | 307 | 12 |
| 2022 | 95 | 99 | 110 | 304 | 12 |
| 2023 | 99 | 103 | 101 | 303 | 13 |
| 2024 | 83 | 109 | 104 | 296 | 13 |
| 2025 | 99 | 91 | 110 | 300 | 14 |
| 2026 | 86 | 109 | 92 | 287 | 13 |
| 2027 | 86 | 93 | 110 | 289 | 13 |
| 2028 | 72 | 94 | 94 | 260 | 11 |
| 2029 | 83 | 78 | 94 | 255 | 11 |

Figure 7: Stephenville Middle School enrolment projections

The projection model shows enrolment increasing to a high of 309 in 2020 before decreasing to a low of 255 in 2029. The school is projected to require a maximum of 14 classrooms in 2025.

STEPHENVILLE HIGH SCHOOL

Assuming the current 9-12 configuration, the enrolment projections for Stephenville High are shown in Figure 8 below. The school has a total of 26 classrooms.

| | 9 | 10 | 11 | 12 | 13 | Total | Rooms |
|------|-----|-----|-----|-----|----|-------|-------|
| 2019 | 96 | 108 | 110 | 84 | 1 | 399 | 15 |
| 2020 | 103 | 98 | 112 | 102 | 1 | 416 | 15 |
| 2021 | 110 | 106 | 101 | 106 | 1 | 424 | 15 |
| 2022 | 119 | 113 | 109 | 96 | 1 | 438 | 16 |
| 2023 | 120 | 122 | 116 | 104 | 1 | 463 | 17 |
| 2024 | 106 | 122 | 125 | 108 | 1 | 462 | 16 |
| 2025 | 110 | 108 | 124 | 116 | 1 | 459 | 16 |
| 2026 | 118 | 112 | 110 | 116 | 1 | 457 | 16 |
| 2027 | 95 | 119 | 112 | 103 | 1 | 430 | 16 |
| 2028 | 106 | 97 | 120 | 106 | 1 | 430 | 15 |
| 2029 | 99 | 108 | 99 | 114 | 1 | 421 | 15 |

Figure 8: Stephenville High enrolment projections

The projection model shows enrolment increasing to a high of 463 in 2023 before decreasing to a low of 421 in 2029. The school is projected to require a maximum of 17 classrooms in 2023.

PATHFINDER LEARNING CENTRE

Pathfinder Learning Centre is an alternate school in the Western region. The student enrolment for both sites (Stephenville and Corner Brook) occurs through an application process. The application process is completed by each school who would be requesting that a student be referred from their school to the Pathfinder Learning Centre in either Stephenville or Corner Brook.

Since this program is application-based and not a normal school enrolment, giving projected enrolments is difficult. The recent trend shows an annual range of 15-20 students at Pathfinder Learning Centre in Stephenville and 15-20 students at Pathfinder Learning Centre in Corner Brook.

The current enrolment of Pathfinder Learning Centre are shown in Figure 9 below, which includes both the Stephenville site and the Corner Brook site. Pathfinder Learning Centre (Stephenville site) uses one room in the L.S. Eddy building.

| | 10 | 11 | 12 | 13 | Total | Rooms |
|------|----|----|----|----|-------|-------|
| 2019 | 1 | 1 | 7 | 14 | 23 | 1 |

Figure 9: Pathfinder Learning Centre enrolment

FIRST CONSULTATION

The District consulted with the school communities using the online platform ThoughtExchange. ThoughtExchange provides an inclusive opportunity for all members of the school communities to participate in the decision-making process, and have their ideas and thoughts considered by their peers. The overall goal is to enhance the District's communication with stakeholders; enhance the transparency of the consultation process, and to ensure all members of the school community have an equal opportunity to have a voice. This process, and information collected, will assist the Board of Trustees in determining what, if any, adjustments should be made to the school system for the 2020-21 school year.

The first consultation for the Piccadilly Central High and Stephenville High school systems posed the following question:

“What are the most important things for the District to consider in reviewing the Stephenville High and Piccadilly Central High school systems?”

The results of this consultation follow on pages 18 to 22.

DEMOGRAPHICS

A total of 229 people participated in the consultation, with 547 thoughts shared. There were a total of 9,512 ratings.

- 166 of the participants shared thoughts.
- 160 participants rated thoughts.
- 176 participants explored thoughts.

Parents and guardians of students made up 70% of the participants.

- Recognizing you may belong to more than one of the following groups, please choose the one that most appropriately describes your role in this exchange.



| % | Count | Role |
|-----|-------|---|
| 70% | (156) | Parent/Guardian |
| 4% | (8) | Extended family member (grandparent, aunt, etc) |
| 3% | (6) | Student |
| 12% | (26) | School staff member |
| 11% | (25) | Community member |

Participants identified most commonly with the Stephenville Primary school community, followed by the St. Thomas Aquinas school community.

- To what school community do you most closely associate? If you have multiple students in the system, please choose the school of your youngest student.



| % | Person Icon | School Community |
|-----|-------------|----------------------------|
| 26% | (57) | St. Thomas Aquinas |
| 28% | (62) | Stephenville Primary |
| 13% | (28) | Stephenville Elementary |
| 9% | (19) | Stephenville Middle School |
| 3% | (7) | Pathfinder Learning Center |
| 7% | (16) | Stephenville High School |
| 2% | (4) | Our Lady of the Cape |
| 4% | (9) | Lourdes Elementary |
| 7% | (15) | Piccadilly Central High |
| 1% | (2) | None of the above |

TOP THOUGHTS

Student Numbers Higher numbers of students would create challenges for teachers and students alike. Affecting the quality of education.



Teaching units Currently class sizes in the primary/elementary feeder schools are at a good class size, increasing these numbers will hurt our students and children.



Comment

The District must adhere to student-teacher ratios established by the Provincial Government. These ratios are related to the number of students enrolled in specific grade levels.

Where are they going to put everyone bigger classrooms with more students and with a child with a disability I feel that he is going to be forgotten.



Having larger class sizes will effect students. Children with learning disabilities and ADHD struggle enough with class size as it is. Going from 20+ kids per class to potentially 30+ seems wrong.



Important to maintain specialist teachers Quality education must be a priority



Comment

Specialist teachers are determined by the overall school enrollment. With respect to Instructional Resource teachers, the needs of specific students are also taken into consideration.

Class size Smaller classes mean that individual students get the support they need.



Travel Some kids may have to travel long periods of time to get to a school out of their area. This could be a huge concern on snow days



Class sizes Classes sizes have gotten so big over the years. How will kids get extra teacher time if there are more kids per classroom



Geographic Location of students The Stephenville area and Port au Port Peninsula is a very large geographic area. Transportation of students on these roads will be quite long



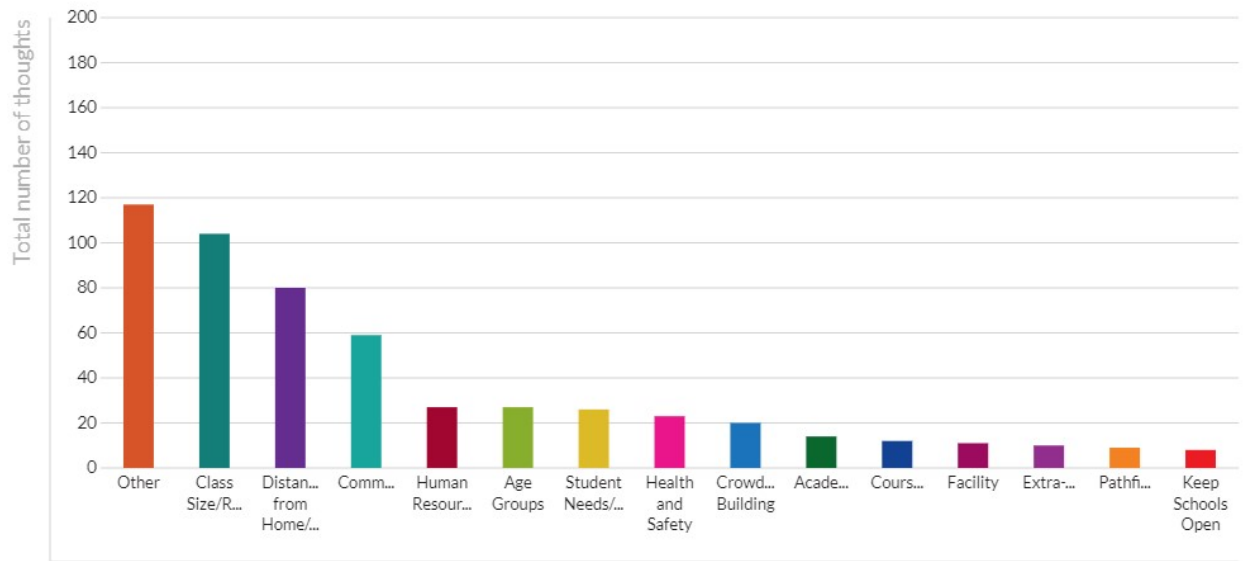
Comment

District staff must adhere to both the Department of Education and Early Childhood Development's policy/legislation as well as NLESD's policy/guidelines when planning bus routes. The links are as follows: <https://www.gov.nl.ca/eecd/k12/busing/legislation/> And <https://www.nlesd.ca/schools/busing/index.jsp>

Smaller class sizes equals students get the assistance they need There is a need for more IRT and SA positions



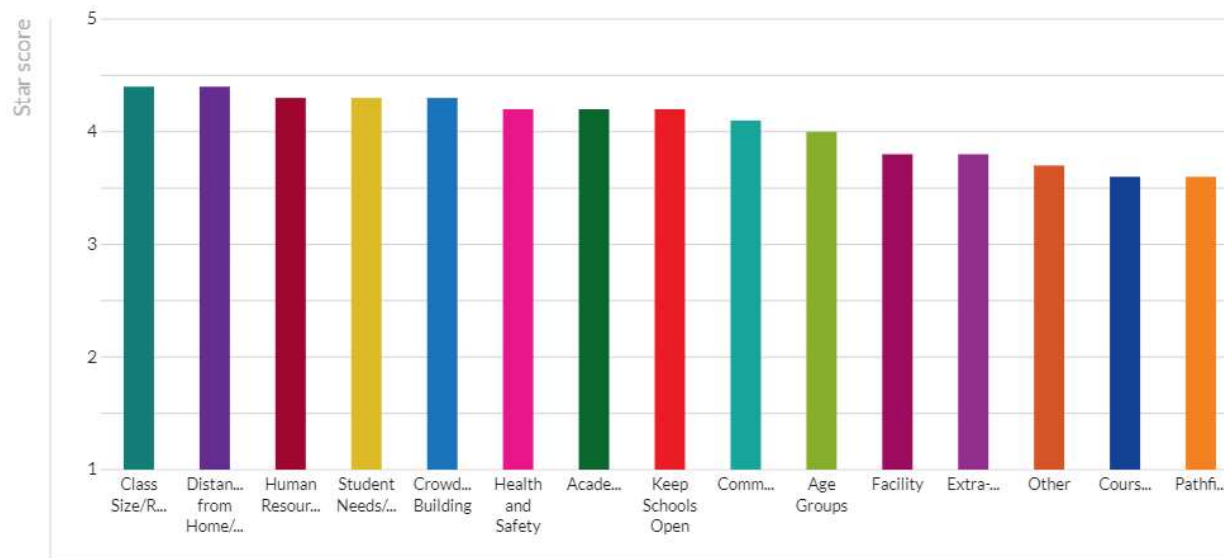
COMMON THEMES



*All themes: Other, Class Size/Ratio, Distance from Home/Transportation, Community, Human Resources, Age Groups, Student Needs/Support, Health and Safety, Crowded Building, Academics, Courses, Facility, Extra-Curricular, Pathfinder, Keep Schools Open

The most commonly-cited thoughts were related to Class Size/Ratio (104), Distance from Home/Transportation (80), and Community (59).

THEME RATINGS



*All themes: Class Size/Ratio, Distance from Home/Transportation, Human Resources, Student Needs/Support, Crowded Building, Health and Safety, Academics, Keep Schools Open, Community, Age Groups, Facility, Extra-Curricular, Other, Courses, Pathfinder

The highest-rated thoughts were related to Class Size/Ratio (4.4), Distance from Home/Transportation (4.4), Human Resources (4.3), Student Needs/Support (4.3), Crowded Building (4.3), Health and Safety (4.2), Academics (4.2), Keeping Schools Open (4.2), Community (4.1), and Age Groups (4.0).

Other feedback has been received by the District from community members and the School Council of St. Thomas Aquinas. All information provided prior to the December 7, 2019 meeting of the Board has been shared with trustees. Feedback received after December 7 will be provided to trustees in advance of the March 28, 2020 meeting.

PROPOSED CONFIGURATION

Stephenville Elementary is proposed to close at the end of the 2019-20 school year. Students who would have attended Stephenville Elementary for Grades 4-5 will attend Stephenville Middle School instead.

Beginning in September 2020, Stephenville Middle School will be reconfigured from a Grades 6-8 school to a Grades 4-7 school. Students who would have attended Stephenville Middle School for grade 8 will attend Stephenville High instead. Stephenville High will be reconfigured from a grades 9-12 school to a grades 8-12 school.

St. Thomas Aquinas is proposed to close at the end of the 2019-20 school year. The Stephenville Primary, Stephenville Middle School, and Stephenville High student attendance zones will be rezoned to include the current student attendance zone of St. Thomas Aquinas. Students who would have attended St. Thomas Aquinas for Grades K-8 will attend Stephenville Primary for grades K-3, Stephenville Middle School for Grades 4-7, and Stephenville High for Grade 8 instead. Students promoted from Grade 8 thereafter would continue to attend Stephenville High.

Students from the existing St. Thomas Aquinas student attendance zone currently attending Piccadilly Central High for Grades 9-12 would continue to attend Piccadilly Central High until completion.

Pathfinder Learning Centre will be scheduled to relocate to the Stephenville Elementary building as of September 2020.



St. Thomas Aquinas and Stephenville Elementary closed.



PICCADILLY CENTRAL HIGH

Assuming the proposed 9-12 configuration, enrolment projections for Piccadilly Central High are shown in Figure 10 below. The school has a total of 11 classrooms.

| | 9 | 10 | 11 | 12 | 13 | Total | Rooms |
|------|----|----|----|----|----|-------|-------|
| 2019 | 28 | 24 | 28 | 23 | 1 | 104 | 4 |
| 2020 | 28 | 28 | 21 | 27 | 1 | 105 | 4 |
| 2021 | 28 | 29 | 26 | 20 | 1 | 104 | 4 |
| 2022 | 26 | 29 | 26 | 24 | 1 | 106 | 4 |
| 2023 | 18 | 27 | 26 | 25 | 1 | 97 | 4 |
| 2024 | 28 | 18 | 24 | 25 | 1 | 96 | 4 |
| 2025 | 15 | 28 | 15 | 22 | 1 | 81 | 4 |
| 2026 | 16 | 15 | 25 | 14 | 1 | 71 | 3 |
| 2027 | 23 | 17 | 12 | 24 | 1 | 77 | 3 |
| 2028 | 24 | 24 | 14 | 11 | 1 | 74 | 3 |
| 2029 | 16 | 24 | 21 | 12 | 1 | 74 | 3 |

Figure 10: Piccadilly Central High enrolment projections

The projection model shows enrolment decreasing to a low of 71 in 2026. The school is projected to require a maximum of four classes from 2020 to 2025.

STEPHENVILLE PRIMARY

Assuming the proposed K-3 configuration, enrolment projections for Stephenville Primary are shown in Figure 11 below. The school has a total of 18 classrooms.

| | K | 1 | 2 | 3 | Total | Rooms |
|------|----|----|----|-----|-------|-------|
| 2019 | 91 | 74 | 93 | 88 | 346 | 17 |
| 2020 | 84 | 97 | 82 | 102 | 365 | 18 |
| 2021 | 83 | 88 | 97 | 81 | 349 | 18 |
| 2022 | 67 | 86 | 89 | 97 | 339 | 18* |
| 2023 | 79 | 70 | 87 | 87 | 323 | 16 |
| 2024 | 82 | 83 | 70 | 86 | 321 | 17 |
| 2025 | 80 | 85 | 83 | 69 | 317 | 15 |
| 2026 | 79 | 84 | 85 | 82 | 330 | 16 |
| 2027 | 78 | 83 | 84 | 84 | 329 | 16 |
| 2028 | 80 | 82 | 83 | 83 | 328 | 16 |
| 2029 | 79 | 84 | 82 | 82 | 327 | 16 |

Figure 11: Stephenville Primary enrolment projections

*The projection for the 2022 school year indicates a room requirement in excess of the 18 room capacity by one student. The school can accommodate enrolment in this year using team teaching in one class for a total of 18 classes.

The projection model shows enrolment decreasing to a low of 327 in 2029. The school is projected to require a maximum of 18 classes from 2020 to 2022.

STEPHENVILLE MIDDLE SCHOOL

Assuming the proposed 4-7 configuration, enrolment projections for Stephenville Middle School are shown in Figure 12 below. The school has a total of 19 classrooms.

| | 4 | 5 | 6 | 7 | 8 | Total | Rooms |
|------|-----|-----|-----|-----|----|-------|-------|
| 2019 | | | 98 | 100 | 93 | 291 | 12 |
| 2020 | 103 | 99 | 112 | 122 | | 436 | 18 |
| 2021 | 111 | 105 | 98 | 121 | | 435 | 18 |
| 2022 | 91 | 112 | 104 | 108 | | 415 | 17 |
| 2023 | 105 | 90 | 111 | 112 | | 418 | 18 |
| 2024 | 96 | 104 | 91 | 121 | | 412 | 18 |
| 2025 | 94 | 95 | 102 | 99 | | 390 | 17 |
| 2026 | 77 | 93 | 96 | 112 | | 378 | 16 |
| 2027 | 90 | 77 | 94 | 103 | | 364 | 15 |
| 2028 | 94 | 89 | 80 | 102 | | 365 | 15 |
| 2029 | 92 | 93 | 90 | 86 | | 361 | 16 |

Figure 12: Stephenville Middle School enrolment projections

The projection model shows enrolment decreasing to a low of 361 in 2029. The school is projected to require a maximum of 18 classes in 2020, 2021, 2023, and 2024.

STEPHENVILLE HIGH

Assuming the proposed 8-12 configuration, enrolment projections for Stephenville High are shown in Figure 13 below. The school has a total of 26 classrooms.

| | 8 | 9 | 10 | 11 | 12 | 13 | Total | Rooms |
|------|-----|-----|-----|-----|-----|----|-------|-------|
| 2019 | | 96 | 108 | 110 | 84 | 1 | 399 | 15 |
| 2020 | 110 | 103 | 98 | 112 | 102 | 1 | 526 | 19 |
| 2021 | 122 | 110 | 106 | 101 | 106 | 1 | 546 | 20 |
| 2022 | 123 | 119 | 113 | 109 | 96 | 1 | 561 | 21 |
| 2023 | 110 | 120 | 122 | 116 | 104 | 1 | 573 | 21 |
| 2024 | 113 | 106 | 122 | 125 | 108 | 1 | 575 | 20 |
| 2025 | 122 | 110 | 108 | 124 | 116 | 1 | 581 | 21 |
| 2026 | 100 | 118 | 112 | 110 | 116 | 1 | 557 | 20 |
| 2027 | 113 | 95 | 119 | 112 | 103 | 1 | 543 | 21 |
| 2028 | 105 | 106 | 97 | 120 | 106 | 1 | 535 | 19 |
| 2029 | 102 | 99 | 108 | 99 | 114 | 1 | 523 | 19 |

Figure 13: Stephenville High enrolment projections

The projection model shows enrolment increasing to a high of 581 in 2025 before decreasing to a low of 523 in 2029. The school is projected to require a maximum of 21 classes in 2022, 2023, 2025, and 2027.

PROGRAMMING AND SERVICES

Based on the motion for these two systems, the information below is for the schools in the Stephenville High school system. However, due to the fact that St. Thomas Aquinas currently feeds into both of the above noted systems after Grade 8, if this motion passes, there will be an impact on the total student enrolment at Piccadilly Central High. More specifically, if the St. Thomas Aquinas students are rezoned, it is projected that the overall enrolment of Piccadilly Central High will decline by an additional 14 students over the next ten year period. The total decrease, including the predicted population decline unrelated to the motion, will be 30 students by 2029. For further details, please refer to the tables on pages 11 and 25. The motion for these systems will have no impact on Lourdes Elementary and Our Lady of the Cape School.

GENERAL PROGRAM COMMENTS

Some of the District's considerations related to the proposed changes for the Stephenville High school system are as follows:

- For students currently attending St. Thomas Aquinas, larger peer groups at the K-6 level in Stephenville would allow for greater social interaction amongst younger learners. Play-Based Learning currently permeates the K-3 classroom and associated instructional strategies centre around students being able to interact with their peer group in various play scenarios (pairs, small group, large group). The class sizes in the proposed reconfigured schools would allow teachers and students to capitalize on these opportunities.
- There would be more concentrated Guidance services in three schools, compared to the current five schools. Consequently, there would be increased opportunities for students to have direct contact with a Guidance Counsellor and to avail of guidance services.
- Both Stephenville Middle School and Stephenville High would receive a supplement to their administrative allocation to provide two full time administrators at each school during the 2020-21 transition year (an additional 0.5 administrative unit for each school).
- With the proposed changes, students would have two transitions from K-12. Students would now have four years at each of the primary and middle schools, and five years at the high school. This increased time at each school would help foster positive relationships between students and staff. This is especially important for addressing the needs of at-risk learners, guidance services and for social-emotional learning.
- With the proposed closure of Stephenville Elementary and movement into a reconfigured Stephenville Middle School, there would be more opportunities for teachers to teach full time in their specialist area, and more opportunities to collaborate within a specialty area. Through such planning and collaboration, teachers can provide enhanced programming and enhanced opportunities for student learning.
- Schools would have larger Student Services (i.e. Special Education) departments. This should enhance collaboration between teachers to meet student needs.
- All students would avail of full time specialist teachers (Music, Physical Education, French and Student Services).
- Stephenville High has a Positive Actions for Student Success (PASS) program/teacher. This program is especially designed to support students at risk. Students in a reconfigured Stephenville High meeting the criteria for support would benefit from this program.
- Kindergarten students from the current St. Thomas Aquinas student attendance zone would have the opportunity to enter the Early French Immersion program in the Stephenville High system which runs from Grades K-12.

Details regarding class configurations, staffing, specialist information, and programming are outlined in the various sections which follow.

CLASS COMPOSITION 2020-2021

All projected staffing information in this document is based on the current teacher allocation guidelines used for the 2019-2020 school year. The tables which follow show the projected number of classroom teaching units. Other allocations for administration, guidance, music, physical education, and student services are provided to schools based on the overall student enrolment. Class sizes are formula-driven for specific grade levels and are not related to the grade configuration or overall student enrolment of a school.

Table 1: St. Thomas Aquinas (Status Quo)

| Grade | Enrolment | Classroom Teaching Units |
|--------------|------------------|---------------------------------|
| | Eng | Eng |
| Grade K | 10 | 1 |
| Grade 1 | 3 | 1* |
| Grade 2 | 8 | *multi-grade with Grade One |
| Grade 3 | 10 | 1 |
| Grade 4 | 9 | 1 |
| Grade 5 | 8 | 1 |
| Grade 6 | 12 | 1 |
| Grade 7 | 14 | 1 |
| Grade 8 | 9 | 1 |
| TOTAL | 83 | 8 |

Notes: 1). There would be a multi-grade 1 and 2 class and all other grades would be single stream. 2). If the motion for this system is passed, St. Thomas Aquinas would close as of June 2020.

Table 2: Stephenville Primary (Status Quo)

| Grade | Enrolment | | | Classroom Teaching Units | | |
|--------------|------------|------------|------------|--------------------------|----------|-----------|
| | Eng | EFI | TOTAL | Eng | EFI | TOTAL |
| Grade K | 46 | 28 | 74 | 3 | 2 | 5 |
| Grade 1 | 58 | 36 | 94 | 3 | 1.5 | 4.5 |
| Grade 2 | 46 | 28 | 74 | 2 | 1.5 | 3.5 |
| Grade 3 | 56 | 36 | 92 | 3 | 2 | 5 |
| TOTAL | 206 | 128 | 334 | 11 | 7 | 18 |

Eng - English Program, EFI - Early French Immersion Program

Note: There would be one combined class, Grades 1 and 2 Early French Immersion.

Table 3: Stephenville Primary (Reconfigured)

| Grade | Enrolment | | | Classroom Teaching Units | | |
|--------------|------------|------------|------------|--------------------------|----------|-----------|
| | Eng | EFI | TOTAL | Eng | EFI | TOTAL |
| Grade K | 56 | 28 | 84 | 3 | 2 | 5 |
| Grade 1 | 61 | 36 | 97 | 2.5 | 1.5 | 4 |
| Grade 2 | 54 | 28 | 82 | 2.5 | 1.5 | 4 |
| Grade 3 | 66 | 36 | 102 | 3 | 2 | 5 |
| TOTAL | 237 | 128 | 365 | 11 | 7 | 18 |

Eng - English Program, EFI - Early French Immersion Program

Notes: 1). If the grade levels of this school were reconfigured as noted above and the student attendance zone changed to include St. Thomas Aquinas, there would be an additional 31 Grades K-3 students from that school. 2). There would be two combined classes (Grades 1 and 2 English stream, and Grades 1 and 2 Early French Immersion).

Table 4: Stephenville Elementary (Status Quo)

| Grade | Enrolment | | | Classroom Teaching Units | | |
|--------------|------------|-----------|------------|--------------------------|----------|----------|
| | Eng | EFI | TOTAL | Eng | EFI | TOTAL |
| Grade 4 | 66 | 28 | 94 | 3 | 1 | 4 |
| Grade 5 | 66 | 25 | 91 | 3 | 1 | 4 |
| TOTAL | 132 | 53 | 185 | 6 | 2 | 8 |

Eng - English Program, EFI - Early French Immersion Program

Note: If the motion for this system is passed, Stephenville Elementary would close as of June 2020.

Table 5: Stephenville Middle School (Status Quo)

| Grade | Enrolment | | | Classroom Teaching Units | | |
|--------------|------------|-----------|------------|--------------------------|----------|-----------|
| | Eng | EFI | TOTAL | Eng | EFI | TOTAL |
| Grade 6 | 76 | 24 | 100 | 3 | 1 | 4 |
| Grade 7 | 84 | 24 | 108 | 3 | 1 | 4 |
| Grade 8 | 79 | 22 | 101 | 3 | 1 | 4 |
| TOTAL | 239 | 70 | 309 | 9 | 3 | 12 |

Eng - English Program, EFI - Early French Immersion Program

Note: If the motion for this system passes, Stephenville Middle School will be reconfigured to a Grades 4 to 7 school and rezoned to include St. Thomas Aquinas.

Table 6: Stephenville Middle School (Reconfigured)

| Grade | Enrolment | | | Classroom Teaching Units | | |
|--------------|------------|------------|------------|--------------------------|----------|-----------|
| | Eng | EFI | TOTAL | Eng | EFI | TOTAL |
| Grade 4 | 75 | 28 | 103 | 3 | 1 | 4 |
| Grade 5 | 74 | 25 | 99 | 3 | 1 | 4 |
| Grade 6 | 88 | 24 | 112 | 3 | 1 | 4 |
| Grade 7 | 98 | 24 | 122 | 4 | 1 | 5 |
| TOTAL | 335 | 101 | 436 | 13 | 4 | 17 |

Eng - English Program, EFI - Early French Immersion Program

Note: If the grade levels of this school were reconfigured as noted above and the catchment area changed to include St. Thomas Aquinas, there would be 43 students from Grades 4-7 attending from that school.

Table 7: Stephenville High (Status Quo)

| Grade | Enrolment | | | Classroom Teaching Units | | |
|--------------|------------|-----------|------------|--|---------------|--------------|
| | Eng | EFI | TOTAL | Eng | EFI | TOTAL |
| Grade 9 | 87 | 16 | 103 | 3 | 1 | 4 |
| Grade 10 | 83 | 15 | 98 | 10.75 High School Regular Units | | |
| Grade 11 | 99 | 13 | 112 | | | |
| Grade 12 | 87 | 15 | 102 | | | |
| Level 4 | 1 | 0 | 1 | | | |
| TOTAL | 357 | 59 | 416 | 3 + HS | 1 + HS | 14.75 |

Eng - English Program, EFI - Early French Immersion Program

Table 8: Stephenville High (Reconfigured)

| Grade | Enrolment | | | Classroom Teaching Units | | |
|--------------|------------|-----------|------------|--|---------------|--------------|
| | Eng | EFI | TOTAL | Eng | EFI | TOTAL |
| Grade 8 | 88 | 22 | 110 | 3 | 1 | 4 |
| Grade 9 | 87 | 16 | 103 | 3 | 1 | 4 |
| Grade 10 | 83 | 15 | 98 | 10.75 High School Regular Units | | |
| Grade 11 | 99 | 13 | 112 | | | |
| Grade 12 | 87 | 15 | 102 | | | |
| Level 4 | 1 | 0 | 1 | | | |
| TOTAL | 445 | 81 | 526 | 6 + HS | 2 + HS | 18.75 |

Eng - English Program, EFI - Early French Immersion Program

Notes: 1.) The enrolment for Grades 8 and 9 reflect the addition of students from St. Thomas Aquinas.
2.) Student numbers from Grades 10 to 12 do not include students who currently and would continue to attend Piccadilly Central High who live inside the revised student attendance zone for Stephenville High.

PATHFINDER LEARNING CENTRE (PLC) - SCHOOL INFORMATION

The Pathfinder Learning Centre is expected to have 31 students in Grades 10 to 12 for the 2020-21 school year and 2.50 regular teaching units.

The Pathfinder Learning Centre meets the educational needs of at risk students who for various reasons do not attend school in a regular setting. It is a single school spread over two sites. There is a Pathfinder site in Stephenville and one in Corner Brook. The school has a single principal based in Stephenville with an additional 0.5 of a teaching unit in Stephenville. There is a single teacher at the campus in Corner Brook at the SD Cook site. In addition, the principal is responsible for supervising a 0.5 teaching unit at Western Memorial Hospital with teaching duties for students who are in care at that facility. **For the purpose of the school review process, only the Stephenville site is being considered.** The motion does not require any changes to grade configurations, student enrolment, or programming for students of Pathfinder. **If the motion for this system passes, then the proposed new site will be the current Stephenville Elementary school building.**

SPECIALIST ALLOCATIONS 2020-2021

Please note that the tables which follow reference specific teacher allocations for Music and Physical Education. However, there is also reference to French Immersion and Core French teachers in the notes. **The French specialty area is part of the overall staffing process and is not included in the allocations outlined in the tables.** French is included in this section to give a more detailed picture of the specialist teachers working in these schools.

| Table 9 | St. Thomas Aquinas (Status Quo), 2020-21 |
|-----------------------|--|
| Specialist Allocation | 0.50 |

Note: St. Thomas Aquinas currently has specialist teachers in Music and Physical Education. With the projected specialist allocation for 2020-2021, they would teach 0.25 in the area of Music and 0.25 in the area of Physical Education. There would also be a Core French teacher with other teaching duties in the regular classroom.

| Table 10 | Stephenville Primary (Status Quo), 2020-21 | Stephenville Primary (Reconfigured), 2020-21 |
|-----------------------|--|--|
| Specialist Allocation | 1.91 | 2.09 |

Note: Stephenville Primary has specialist teachers in the areas of Music, Physical Education and French Immersion. Each teacher teaches full time in their specialist area.

| Table 11 | Stephenville Elementary (Status Quo), 2020-21 |
|-----------------------|---|
| Specialist Allocation | 1.06 |

Note: Stephenville Elementary has specialist teachers in the areas of Music, Physical Education and French. Each allocation in Music and Physical Education is 0.50 with each teacher teaching 0.50 in the regular classroom. Core French is taught by classroom teachers.

With the proposed closure of Stephenville Elementary and movement into a reconfigured Stephenville Middle School, there would be more opportunities for specialist teachers to teach full time in their area, and more opportunities to collaborate with specialist partners. Through such planning and collaboration, teachers can provide enhanced programming and enhanced opportunities for student learning.

| Table 12 | Stephenville Middle School (Status Quo), 2020-21 | Stephenville Middle School (Reconfigured), 2020-21 |
|------------------------------|---|---|
| Specialist Allocation | 1.96 | 2.61 |

Note: Stephenville Middle School has specialist teachers in the areas of Music, Physical Education and Core French/French Immersion. Each teacher of Music and Physical Education teaches full time in their specialist area. The Core French teacher also teaches in the regular classroom.

| Table 13 | Stephenville High (Status Quo), 2020-21 | Stephenville High (Reconfigured), 2020-21 |
|------------------------------|--|--|
| Specialist Allocation | 2.48 | 3.21 |

Note: Stephenville High has Specialist teachers in the areas of Music, Physical Education and French. Each teacher teaches full time in their specialist area.

STUDENT SERVICES - INSTRUCTIONAL RESOURCE TEACHER (IRT) SUPPORT

Please note that for tables 14-18 which follow, there is also an additional IRT allocation given to every school based on the provision of programming for students who have been diagnosed with an exceptionality. This is determined yearly based on the needs which exist in a specific school.

| Table 14 | St. Thomas Aquinas (Status Quo), 2020-21 |
|-----------------------|---|
| IRT Allocation | 0.50 |

Note: If St. Thomas Aquinas remains open, the IRT allocation would be 0.50 of a teaching unit.

| Table 15 | Stephenville Primary (Status Quo), 2020-21 | Stephenville Primary (Reconfigured), 2020-21 |
|-----------------------|---|---|
| IRT Allocation | 2.25 | 2.5 |

Note: If St. Thomas Aquinas closes and K-3 students move into the rezoned Stephenville Primary School (K-3), the projected IRT allocation would be 2.5 units.

| Table 16 | Stephenville Elementary (Status Quo), 2020-21 |
|-----------------------|--|
| IRT Allocation | 1.25 |

Note: If Stephenville Elementary remains open for the 2020-2021 school year, there would be 1.25 units for IRT.

| Table 17 | Stephenville Middle School (Status Quo), 2020-21 | Stephenville Middle School (Reconfigured), 2020-21 |
|-----------------------|---|---|
| IRT Allocation | 2.25 | 3.0 |

Note: If Stephenville Elementary closes and students move from that school into the newly-reconfigured Grades 4-7 school with students from St. Thomas Aquinas, the IRT allocation would be 3.0 units.

| Table 18 | Stephenville High (Status Quo), 2020-21 | Stephenville High (Reconfigured), 2020-21 |
|-----------------------|--|--|
| IRT Allocation | 3.00 | 3.75 |

Note: If Stephenville Middle School is reconfigured and the Grade 8 students move from that school into the newly reconfigured Grades 8-12 school with students from St. Thomas Aquinas, the IRT allocation would be 3.75 units.

STUDENT SERVICES - OVERALL WITH PROPOSED CHANGES

It is anticipated that the total IRT allocations for Stephenville schools would remain the same for next year if the proposed changes are made. However, the 9.25 units would be assigned differently due to the rezoning and reconfiguration of schools as noted in tables 14-18. These units would be concentrated in three schools instead of five, resulting in larger Student Services departments. Consequently, there should be more opportunities for teacher collaboration to support student needs.

Stephenville High has a Positive Actions for Student Success (PASS) program/teacher. This program is especially designed to support students at risk. Students in a reconfigured Stephenville High School meeting the criteria for support could benefit from this program.

GUIDANCE COUNSELLING SERVICES AND SOCIAL-EMOTIONAL LEARNING

| Table 19 | Stephenville Primary (Status Quo), 2020-21 | Stephenville Primary (Reconfigured), 2020-21 |
|---|---|---|
| Guidance Allocation | 0.67 | 0.73 |
| <ul style="list-style-type: none"> • Guidance allocation currently shared with Stephenville Elementary • Space: A Guidance Counsellor office with calming areas and student interactive materials • Social Emotional Learning: Children’s Friendship Program, Kids in the Know, Roots of Empathy | | |

| Table 20 | Stephenville Elementary (Status Quo), 2020-21 |
|---|--|
| Guidance Allocation | 0.37 |
| <ul style="list-style-type: none"> • Stephenville Elementary would close in June 2020 if the motion for this system passes • Guidance services are currently shared with Stephenville Primary • Social Emotional Learning: Kids in the Know and Friends for Life | |

| Table 21 | Stephenville Middle School (Status Quo), 2020-21 | Stephenville Middle School (Reconfigured), 2020-21 |
|--|---|---|
| Guidance Allocation | 0.62 | 0.87 |
| <ul style="list-style-type: none"> • Guidance allocation currently shared with St. Thomas Aquinas • Social-emotional learning: a variety of presentations in consultation with the school public health nurse, anti-violence activities, Wellness Day, Kids Rock (making community connections and partnerships) • Qalipu first nations partnership | | |

| Table 22 | Stephenville High (Status Quo), 2020-21 | Stephenville High (Reconfigured), 2020-21 |
|---|--|--|
| Guidance Allocation | 0.83 | 1.05 |
| <ul style="list-style-type: none"> Social-emotional learning: Safe and Caring School Committee, liaison with the RCMP, ongoing partnership with the Community Youth Network and Wellness Day | | |

| Table 23 | St. Thomas Aquinas (Status Quo), 2020-21 |
|--|---|
| Guidance Allocation | 0.17 |
| <ul style="list-style-type: none"> St. Thomas Aquinas would close in June 2020 if the motion for this system passes Guidance services are currently shared with Stephenville Middle School Social-emotional learning: Care Kit (Gr. 1,2 and 3), Friends for Life (Gr. 5), and a Wellness Day Drug Abuse Resistance Education (DARE) provided by the RCMP Qalipu first nations partnership | |

GUIDANCE AND SOCIAL-EMOTIONAL LEARNING – OVERALL

- If the proposed changes to the Stephenville High school system are made, Tables 19-23 show more concentrated Guidance services in three schools, compared to the current five schools. Consequently, there would be increased opportunities for students to have direct contact with a Guidance Counsellor and to avail of guidance services. However, the overall Guidance allocation for this system remains the same with or without the proposed changes (total of 2.65 guidance units in the Stephenville system).
- These reconfigured guidance allocations should increase the opportunity to interact with students during non-scheduled time (before classes beginning, recess, lunch and after school), since there would be more time in each school.
- Stephenville High would have a full time guidance unit if the proposed changes were implemented.
- With the proposed changes, all students would have two school transitions from K-12.
- Students would attend a reconfigured Stephenville Middle School for four years and a reconfigured Stephenville High school for five years. This extra time in each school would give staff more time to build relationships with the students, which is especially important for guidance, social-emotional learning and student support services.
- The Guidance Counsellor at each of Stephenville Middle School and Stephenville High would have an increased ability to deploy throughout the school in support of children, youth and staff who have experienced a traumatic/critical incident.

EDUCATION ACTION PLAN

The Education Action Plan is the result of the Premier's Task Force on Improving Educational Outcomes. This K-6 initiative started to be implemented during the 2018-2019 school year, with a three year phase-in period. Schools involved in the 2018-2019 school year are known as Phase One schools. Schools that started with the initiative during the current 2019-2020 school year are known as Phase Two schools. It is expected that all of the remaining schools with some combination of K-6 grades will become involved as Phase Three schools during the 2020-2021 school year.

Some of the benefits of being involved in this initiative are as follows:

- Extra personnel including a Reading Specialist, Teaching and Learning Assistant and an extra allocation for the Teacher Librarian position.
- With the benefit of a Reading Specialist there is regular collaboration with teachers to support reading instruction. This specialist also works to support students who have reading difficulties.
- Enhanced teacher team structures in the Phase schools to further support student learning and identified learning needs in the areas of numeracy, literacy and social emotional learning.
- Schools have created a school Library Learning Commons. This involves a whole school approach creating opportunities for collaboration among all curriculum areas within the school community. The learning commons encourages collaboration among students and teachers and promotes student engagement. There is an enhanced focus on collaboration, communication, critical thinking and creative thinking.

Stephenville Primary is a Phase One school (began September 2018). As a Phase school the allocation is as follows: 1.0 unit for a Teacher Librarian, 1.0 unit for a Reading Specialist, and 2.00 units for Teaching Learning Assistants. This allocation would be the same with or without the proposed changes.

Stephenville Elementary is a Phase Two school (began September 2019). As a Phase school the allocation is: 0.50 of a unit for a Teacher Librarian, 0.50 of a unit for a Reading Specialist and 1.0 unit for a Teaching and Learning Assistant.

Stephenville Middle School (status quo) is scheduled to become a Phase school in 2020-21. Based on the current staffing model for this initiative, the school is projected to receive an allocation of: 0.50 of a unit for a Teacher Librarian, 0.50 of unit for Reading Specialist, and a 1.0 unit for a Teaching and Learning Assistant.

With the **proposed reconfiguration**, Stephenville Middle School is projected to receive an allocation of: 1.0 unit for a Teacher Librarian, 1.0 unit for a Reading Specialist, 2.0 units for Teaching and Learning Assistants. With the proposed closure of Stephenville Elementary and move to this reconfigured school, students would benefit from the increased resources.

Stephenville High will not be a Phase school due to the school configuration. However, the school has a projected Teacher Librarian allocation of 0.42 of a unit for 2020-2021 if it stays status quo and 0.53 of a unit if reconfigured and with the St. Thomas Aquinas students.

The school has Department Heads in Student Services, Mathematics, English, and Social Studies. The role of the Department Head is to lead the subject specific division with regular data analysis, and continuous collaboration for increased student engagement and success.

St. Thomas Aquinas (status quo) is scheduled to become a Phase school in 2020-21. Based on the current staffing model, the school is projected to receive an allocation of 0.50 of a unit for a Reading Specialist, 1.0 unit for a Teaching and Learning Assistant and a small allocation for a Teacher Librarian.

SPECIALTY AREAS TO SUPPORT PROGRAMMING/CURRICULUM IMPLEMENTATION

St. Thomas Aquinas has the following specialist spaces and resources:

- A music room with computer, interactive whiteboard, digital piano, complete set of band instruments, world drum kit, bodhrans, bells (bar style), xylophones, a class set of guitars, ukuleles, boom whackers, and a variety of other instruments and resources including chairs, risers, and music stands.
- A gymnasium, equipped and resourced for the K-8 curriculum, with a storage/equipment room.
- Dedicated Instructional Resource Teacher space with sensory area, desktop computers, interactive whiteboard, washroom (in room).
- Separate Guidance office; also functions as a Speech Language Pathologist office and Public Health Nurse area.
- Dedicated French classroom with a computer and interactive whiteboard.
- Students have ready access to the Public Library throughout the week.
- Dedicated computer lab with multipoint units (computers), teacher computer and interactive whiteboard.
- Chromebooks (Tablet style, flip), iPads and Apple MacBook Pro.
- Multipoint units for student use in six classrooms.
- Technology/Makerspaces for production design and engineering.
- Sets of Spheros, Blue Bots, Microbits, MB Inventors' kits.
- Theatre lighting.
- Dedicated pre-school room with all necessary equipment to deliver the program.
- Science Lab for K-8 curriculum. Also doubles as Home-Economics space for textiles, etc. Sewing machines and other textile supplies.

If St. Thomas Aquinas closes in June 2020, learning resources and equipment would be distributed to the receiving schools.

Stephenville Primary has the following specialist spaces and resources:

- A music room with risers, Smartboard, sound system, Orff instruments, concert materials, etc.
- A Library Learning Commons, with a variety of resources such as: French and English reading materials, games, Green Screen, Smartboard, class set of computers, Makerspace, flexible learning areas, iPads.
- A Library Learning Commons extension room used by staff for additional programming needs.
- A Guidance Counsellor office with calming areas and student interactive materials.
- A gymnasium with a variety of multi-sensory equipment, a stage area with accessible lift, inwall tables and seating, canteen wicket, etc.
- Reading Specialist room with a variety of resources.
- Travelling library for social-emotional learning.
- Six spaces available for instructional resource support (including alternate space for sensory programming). Five of these spaces are equipped with Smartboards and computers. In room washroom in space used for individualized programming for students with an exceptionality. An office for the Speech Language Pathologist/School Nurse with a washroom.
- Grade level and French immersion sets of iPads in movable storage carts.
- Two playground areas with equipment to foster play based learning, fenced and secure.
- Five Kindergarten classrooms with in room washrooms.

With the proposed changes for 2020-21, this school will be rezoned to include St. Thomas Aquinas students.

Stephenville Elementary has the following specialist spaces and resources:

- Music room with a Smartboard, two pianos, an assortment of musical instruments, risers, accordions.
- Learning commons with an assortment of reading materials, flexible seating, Green Screen, sewing machines, Makerspace, French reading materials, Smartboard, etc.
- Guidance Counsellors office.
- Computer lab with desk tops and Smartboard.
- Room available for sensory programming and 3 Instructional Resource Teacher rooms.
- A gym with a storage/equipment room.
- Chromebooks on a storage cart and iPads.
- Core French classroom with Smartboard and computer.
- Offices for Speech Language Pathologist, Educational Psychologist and a Nurses room.
- Science lab/art room equipped for programming purposes for elementary outcomes.

With the proposed changes for 2020-21, this school would close and the Pathfinder Learning Centre would relocate to this site. Resources would be moved as needed from Stephenville Elementary to the remaining schools in this system.

Stephenville Middle School has the following specialist spaces and resources:

- Gymnasium that can be divided by a wall to create two Physical Education instruction areas. It also contains a mat room that can be used for activities needing a padded floor; has a stage.
- Music room with a Smartboard, risers built into the floor, instruments for band, guitars, class set of ukuleles, full percussion section for band, class set of xylophones, a piano, and a keyboard.
- Skilled Trades room with eight workstations and two utility rooms (paint room and sanding room).
- Home-Economics room that can be divided into two classrooms, cooking area and workspace. Full kitchen including demonstration area and four other workstations.
- Audio Visual room with Smartboard, tiered seating for approximately 100, includes a projection room.
- Instructional Resource Teacher room with an interactive board, fully contained bathroom and small kitchen area. Secondary Instructional Resource Teacher room for an alternate setting to accommodate student programming.
- Three spaces used for Instructional Resource support, all equipped with Smartboards and computers and three other spaces without Smartboards.
- Computer room with workstations.
- Learning Resource room with a varied set of books and magazines, computer workstations, and a Smartboard.
- Two Science labs. Both have demonstration areas and eight workstations. The second lab also has a small greenhouse area.
- Art room with art tables and self-contained art supply storage.
- Makerspace room with class set of micro bits, ozobots, sferos, Green Screen with lights and other needed equipment, 3D printer, sewing machines, Lego table, Cricut devices.
- Guidance Counsellor office.
- Nurse's room.
- Two class sets of Chromebook carts and a class set of iPads
- Space available for a separate core French classroom with a Smartboard and computer.

With the proposed changes for 2020-21, Stephenville Middle School would be rezoned and reconfigured to Grades 4-7.

From a facilities perspective, appropriate fencing would be added to the Stephenville Middle School property for outside recreation. In accordance with student supervision regulations, K-6 students must remain on school property during recess and lunch unless otherwise arranged by the school and approved by the principal, with parents' consent.

Stephenville High has the following specialist spaces and resources:

- Theatre with a stage and seating used for music and band. Class set of guitars, piano and other musical instruments.
- Learning Commons with a Smartboard, a writeable wall area 21 ft x 8 ft, a student seating area, and student computers.
- Two computer labs, both with a Smartboard.
- A guidance office with a separate room with two computers for students.
- An office for Speech Language Pathologist/Educational Psychologist.
- Three science labs.
- Two class sets of iPads on movable carts.
- Gymnasium with a stage, a gym divider curtain and a fitness room.
- Two Persuasive Needs rooms which include a kitchen, a sensory room, and computers with Smartboards.
- Five IRT rooms for support, each room has a Smartboard and iPads for student use.
- Skilled Trades room with a separate tech lab with computers and a 3D printer.
- Centre for Distance Learning and Innovation (CDLI) classroom with computers.
- Art room with a student computer and a Smartboard.
- Wellness room that can be used as a sensory room.

With the proposed changes for 2020-21, Stephenville High would be rezoned and reconfigured to a Grades 8-12 school.

Pathfinder Learning Centre has the following spaces and resources:

- A classroom space to accommodate all students and teachers. This space contains a combination of tables and computer workstations for student self-paced work.
- An office space for the principal and teacher preparation area.
- A gymnasium and separate fitness room.
- A boardroom for meetings.

These learning spaces and specialty areas can all be made available at the proposed new site (the current Stephenville Elementary building).

USE OF TECHNOLOGY TO ENHANCE PROGRAMMING/OPTIONAL PROGRAMS

The following is an overview of the technology available in each school to support student learning.

St. Thomas Aquinas uses Google Suite and Google Classroom and has a Raz-Kids subscription. They have “code class” and technology class for K-6 students to enhance the curriculum. In these classes, students explore a variety of technology activities including: Scratch Code, Microbits, BlueBots and Spheros.

The school has created “Knowledge Hour” for all K-8 students. Examples of engagement activities include: elephant toothpaste (from chemistry), learning to bake, sew, knit, crochet, woodwork, fly-fish, sculpt, engineering activities, art techniques, and varied research projects (all student directed).

Stephenville Primary has iPads used for Play Based Learning centres, as well as during Daily 5 activities. There are computers in the Library Learning Commons, along with iPads to use with the Green Screen and in the Makerspace. Some of the software used includes: Raz-Kids, Epic, and Math 3 Under the Sea.

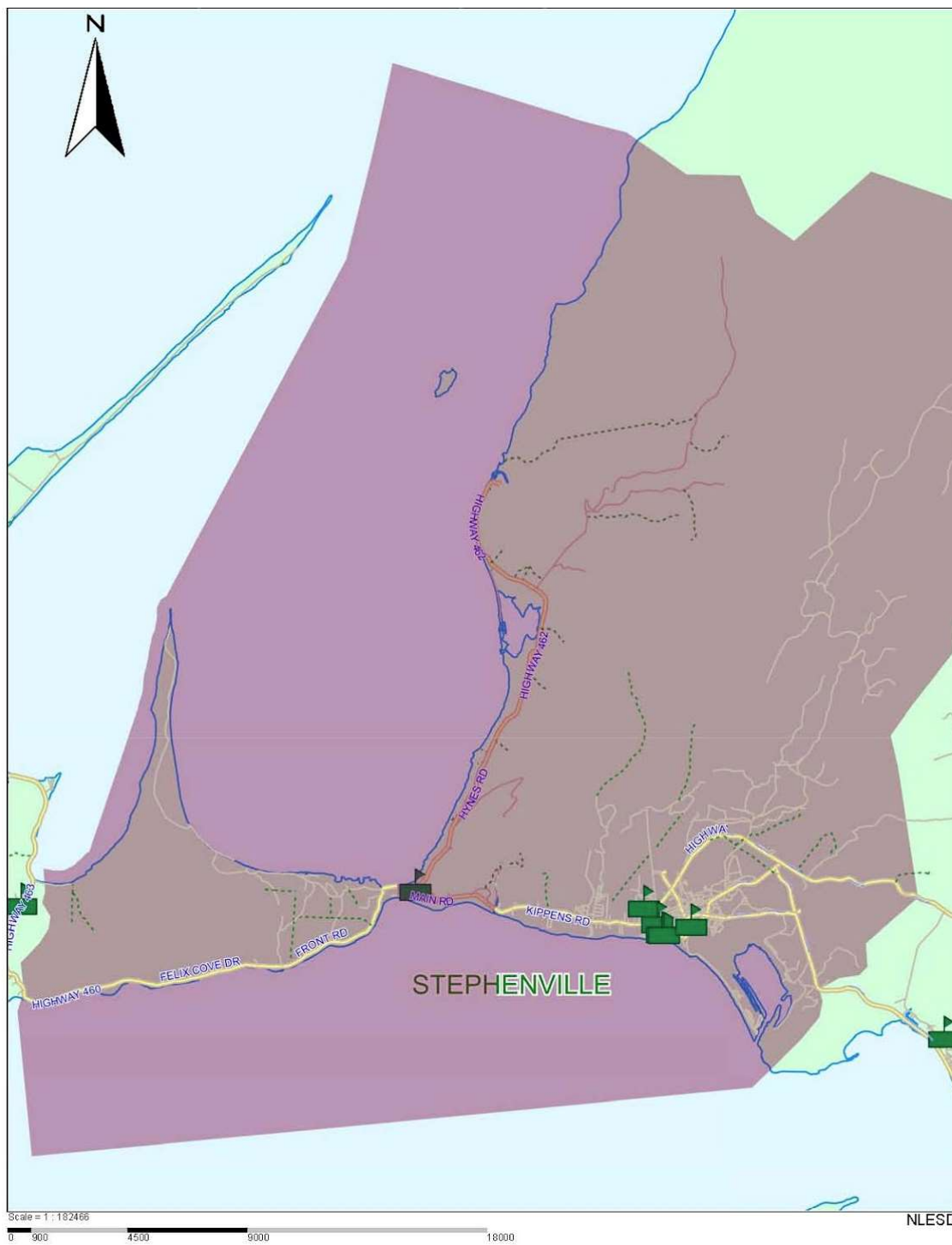
Stephenville Elementary uses Chromebooks and iPads to enhance student learning, and specifically as a means to support assistive technology. The school has established a library learning commons with flexible seating, where students also have access to iPads and Chromebooks. They use Smart Podium, Green Screen, Ozobots, and Spheros. They are currently setting up Makerspace.

Stephenville Middle School has extended their programming to increase student engagement. The school has created project based learning activities. The areas include: Home Economics, Wood Working, Code (Ozobots, Sphero and Micro-Bits), Cricut Design and Production, 3D Print Production, Theatre Arts, Beginner Guitar, Photography, and Green Screen Production. With each of these areas, students are exposed to skills and then use these skills to complete a project. These activities have had a positive impact on learning and has created productive conversations amongst students. Other examples of classroom practices and activities are: Micro-Bits in mathematics, Ozobots, Green Screens and Sphero's in French, Tag in math and science, Hands on labs in science, and Activity Clusters. Raz-Kids is used as part of the guided reading program and is an integral part of the Instructional Resource support.

Stephenville High has French Immersion Grades 9 to 12, an after school concert band, and a Community Youth Network based in the school. The school is in the process of updating their technology to provide students with greater access through Learning Commons upgrades. They are also in the process of converting a room into a Student Services computer support lab.

TRANSPORTATION

The student attendance zone for the proposed configuration of Stephenville Primary, Stephenville Middle School, and Stephenville High is shown below.



There are currently 3 vehicles servicing St. Thomas Aquinas. The proposed reconfiguration would require one additional vehicle in order to provide service to students residing in the existing student attendance zone for St. Thomas Aquinas, which extends to Fox Island River, Boswarlos, and Campbell's Creek. Simulated runs of these routes were conducted by the regional bus manager, using a full-sized school bus, and making all stops and following posted speed limits to ensure run times are within District standards.

The current longest bus run in the Stephenville High system is 57 minutes from Stephenville Primary to Cold Brook. The current longest bus run in the Piccadilly Central High system is 54 minutes from Piccadilly Central High to Black Duck Brook and from Piccadilly Central High to Boswarlos. The proposed configuration changes would not change these runs.

The current longest bus run for St. Thomas Aquinas is 35 minutes to Fox Island River. With the proposed configuration changes, the longest run time from the existing student attendance zone for St. Thomas Aquinas would be 49 minutes from Stephenville High to Fox Island River.

Winter driving conditions are estimated to add five to 10 minutes to any given route.

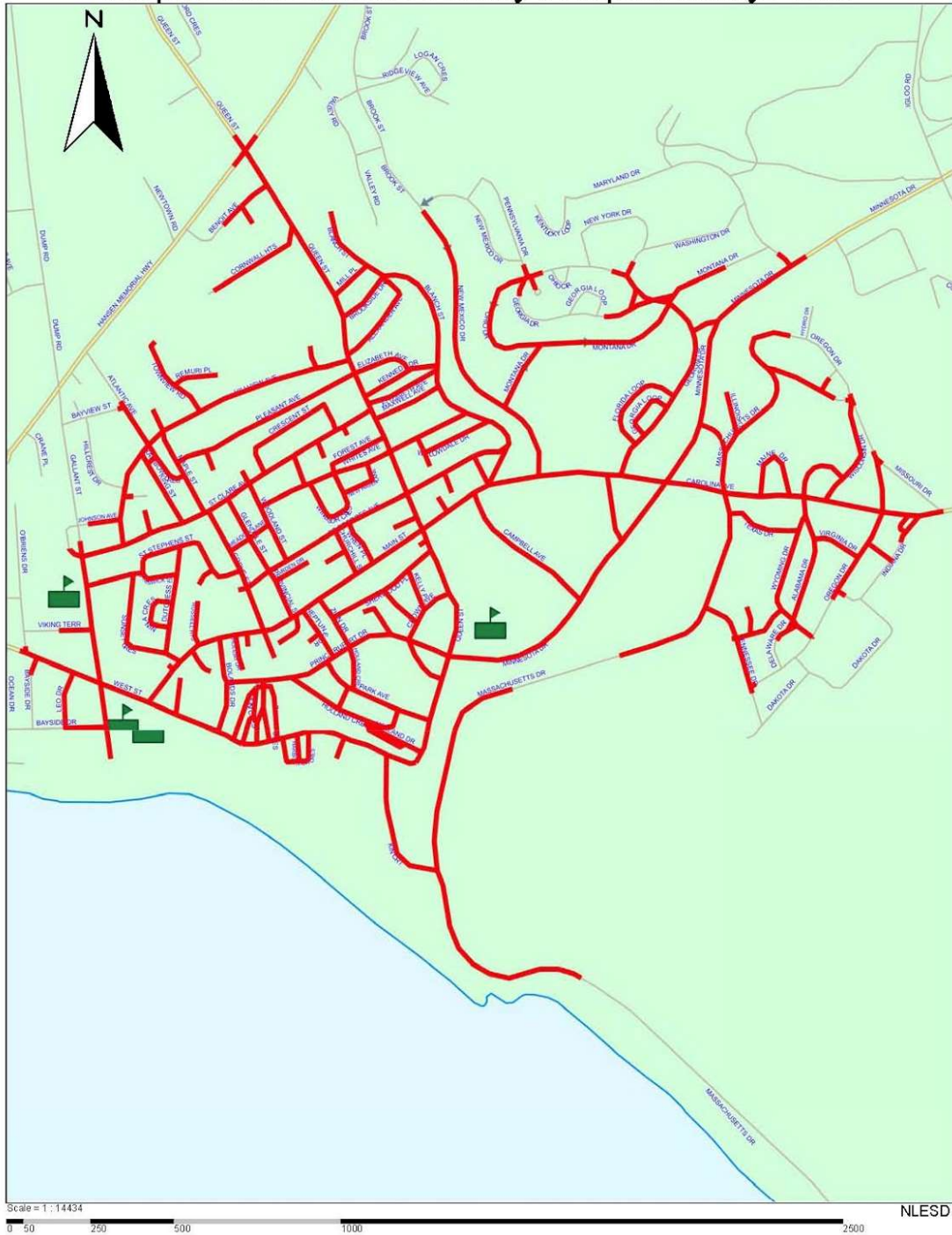
The Family Responsibility Zone for Stephenville Primary is shown below. With the proposed configuration changes, it would include 113 non-bus-eligible students. There would be no change to this Family Responsibility Zone with the proposed configuration change. All students currently in the student attendance zone for St. Thomas Aquinas would qualify for busing to Stephenville Primary.

Stephenville Primary Family Responsibility Zone



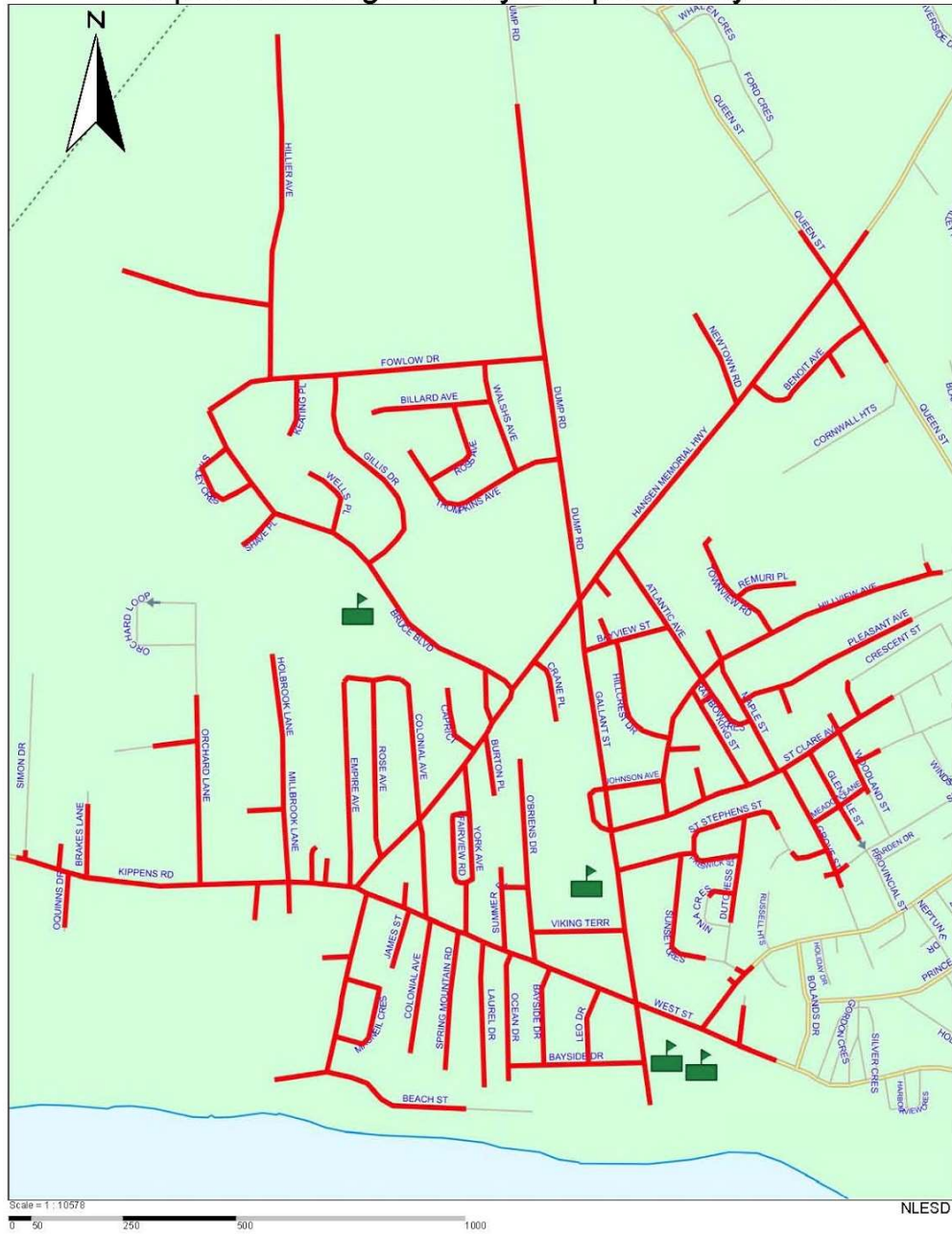
The Family Responsibility Zone for Stephenville Middle School is shown below. With the proposed configuration change, it would include 159 non-bus-eligible students. There would be no change to this Family Responsibility Zone with the proposed configuration change. All students currently in the student attendance zone for St. Thomas Aquinas would qualify for busing to Stephenville Middle School.

Stephenville Middle Family Responsibility Zone



The Family Responsibility Zone for Stephenville High is shown below. With the proposed configuration change, it would include 140 non-bus-eligible students. There would be no change to this Family Responsibility Zone with the proposed configuration change. All students currently in the student attendance zone for St. Thomas Aquinas would qualify for busing to Stephenville High.

Stephenville High Family Responsibility Zone



RESULTING FINANCIAL IMPACT

Annual cost reductions for each school are estimated based on projected student enrolment for the 2020-21 school year and may vary in future years. Reductions are comprised of support staff salaries, facility operating costs, and transportation costs. These figures do not reflect potential changes in instructional units (for information regarding changes in instructional units, see Programming and Services section above). Actual reductions will vary from estimated amounts due to a number of unknown factors, such as potential costs relating to upkeep of vacant school buildings during disposal period.

The proposed configuration change would result in an estimated annual reduction in costs of between \$200,000 and \$208,000 from the closure of St. Thomas Aquinas.

The proposed configuration would also result in an estimated annual reduction in costs of between \$263,000 and \$269,000 from the closure of Stephenville Elementary and the relocation of Pathfinder Learning Centre to the current Stephenville Elementary building.

Further information on these schools can be found at the links below.

Lourdes Elementary: www.nlesd.ca/schools/schoolprofile.jsp?id=375

Our Lady of the Cape School: www.nlesd.ca/schools/schoolprofile.jsp?id=379

St. Thomas Aquinas: www.nlesd.ca/schools/schoolprofile.jsp?id=399

Piccadilly Central High: www.nlesd.ca/schools/schoolprofile.jsp?id=383

Stephenville Primary: www.nlesd.ca/schools/schoolprofile.jsp?id=403

Stephenville Elementary: www.nlesd.ca/schools/schoolprofile.jsp?id=400

Stephenville Middle School: www.nlesd.ca/schools/schoolprofile.jsp?id=402

Stephenville High: www.nlesd.ca/schools/schoolprofile.jsp?id=401

Pathfinder Learning Centre: www.nlesd.ca/schools/schoolprofile.jsp?id=382